

# DIY Outdoor Living

*DIY Done Right*



**BIG RIDGE™**



Outdoor Kitchens

***Rapid Panel™***  
***Outdoor Kitchen System***

[www.diyoutdoor.kitchen](http://www.diyoutdoor.kitchen)

## ABOUT US

# Why Do We Do What We Do ?

*We believe our customers deserve more than just a product. Instead, our aim is to provide an amazing experience while assisting our clients to create an outdoor kitchen that is all their own. We know the pride one feels when they make something truly special and want to be part of that with every client.*

We are a family owned company. It seems family time is lost a little more every year. Technology consumes most of what little family time there is. We are proud to make a product that can help you get some of that time back. Take back your family time.

Our company started in 2011 after our founder in an attempt to regain some of his family time decided to build an outdoor kitchen. With funds limited, he decided the only way to make it happen was to build it himself.

Not a builder by trade, he did a lot of research. He came across several companies that offered diy frame kits made of steel as well as concrete. He ended up purchasing a steel frame kit as it looked to be the easiest and quickest method. Unfortunately, the kit was so basic that it still required him to do all the work that he was unsure

how to do. Moreover, the kits really only offered the easy parts.

The most difficult parts, like squaring, figuring out the appliance and door cutouts, and GFCI boxes still needed to be done. Also, the kits did not contain all the needed hardware and steel necessary to complete the job requiring him to make several more orders.

Though his outdoor kitchen turned out fine, it was a very frustrating process. It was this frustration that led to the development of the Rapid Panel™ System. Over the years we have developed the easiest system on the market. How do we do it? Well it's simple, we do the hard work for you and include everything you need! I know shocking right? But yeah, that's it. When you get your kit, you are literally ready to finish it in minutes not weeks.



## Our Commitment

We are committed to working with you to find what works in your specific situation. We won't sell you anything just to make a sale. Instead, we give you the education to make a decision even if it means you don't buy from us. We believe that strongly in our products and service and feel you will too. Give us a try, you won't regret it!

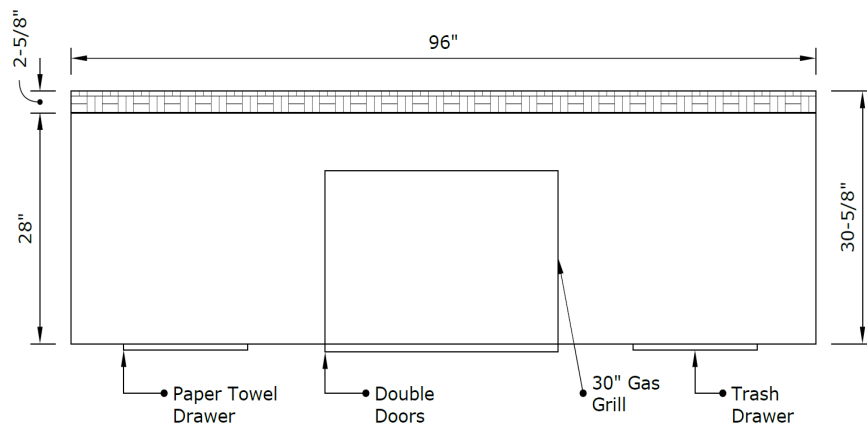
## What Makes Us Different

- Free Design assistance and guidance through the process.
- We listen and we care. We're not too big to provide individual assistance.
- We build your custom outdoor kitchen based on your needs and wants.
- Our processes produce the best outdoor kitchens on the market.





# Our Process



## Step 1 Work With Our Designers To Make The Perfect Outdoor Kitchen For Free

Our designers work with you to put together your outdoor kitchen the way you want it. If you don't know what you want yet, that's okay, we will help you through it.

We never charge custom rates. The prices are the same as our standard modules.

We revise it until you are happy with it. Then on to step 2.

## Step 2

Assemble Your Rapid Panel™ Frames. Then Install Your Doors And Appliances.

Easily reassemble your Rapid Panel™ frames. Since every outdoor kitchen is preassembled in our factory, you just put it back together the way we had it. This 8' kitchen took under 10 minutes to reassemble.

Next, install your appliances and you are ready to put the finish materials on.



## Step 3 Apply Your Finish Materials And Hook Up Utilities. Now Enjoy Your Outdoor Kitchen!

Just finish with your choice of stone, stucco, or any other finish you desire.

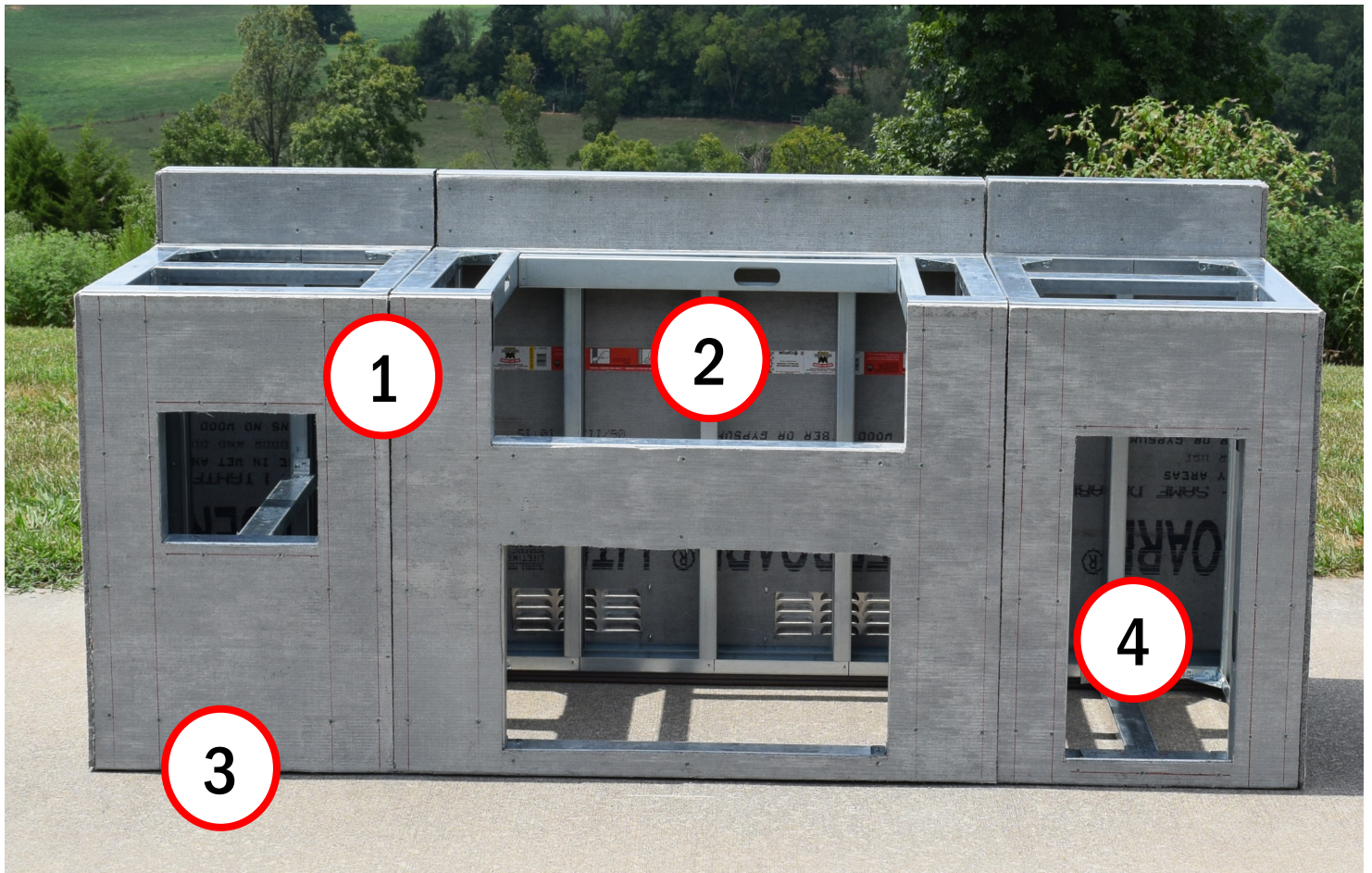
On an outdoor kitchen this size, you can finish the stone work in a weekend. This is the fastest way to build your outdoor kitchen. Now get your family and friends and enjoy the great outdoors!

# OUR PRODUCTS

## WHAT MAKES US DIFFERENT?

*Today there are several options on the market for the DIY outdoor kitchen consumer. At first glance, it can be difficult to tell one product from another. Unfortunately, this often leads to decisions based on cost alone. At Big Ridge, our value is more than skin deep. We prefer to be transparent and allow you to make the best decision for you and your family.*

Much of the value in our products is in what you don't see. Behind the scenes we work to make your outdoor kitchen easy to install. Let's look at a few things you don't see that save you time, money, and a lot of hassle. Most importantly, we don't cut corners to save a buck. With Big Ridge you get an investment not just a product.





## Big Ridge Rapid Panels™

## DIY Done Right

1



## Fully Pre-Assembled

At Big Ridge, all of our outdoor kitchens are pre-assembled on level benches. They are squared, leveled and assembled. This is the most difficult and time consuming part of the project. This is especially important for custom pieces. With our kits, you just reassemble them the way we had them.

Other companies send you stock panels and some stock steel to cut yourself. You are left to figure out how and what to do. In other words, the hardest part of the project is left for you to do.

2



## Your Appliance Cutouts Installed

Another time saver Big Ridge offers is the installation of all the door / drawer and appliance cutouts. We take your counter top material and side finish material dimensions and determine the cutouts. Did I mention we do this free of charge? Well we do! This saves time and frustration on build day.

Other companies only send you stock cutout kits. You need to figure out how to cut and install them. This often results in several mistakes which makes you purchase more materials increasing cost and time to finish the project.

3



## Composite Decking Installed

To protect your investment, we attach protective composite decking under all your frames. This keeps the steel from contacting standing water. This protects your frames from corrosion. We also install them with gaps. These gaps allow for additional venting of dangerous gas buildup. This is free of charge as well.

Other companies don't offer this important component leaving your investment vulnerable.

4



## Fully Welded Frames

Big Ridge Rapid Panels™ feature fully welded frames. Aside from being stronger than the traditional screws used by other manufacturers, they also allow for tighter fit and finish. Since your outdoor kitchen is an investment, why not ensure it lasts. Our fully welded frames are built to do just that.

Other manufacturers use screws to build their frames. This is due to the considerable increase in equipment and labor costs associated with the welding process. Big Ridge feels that welding is the only acceptable method of assembly.

# Why Fully Welded Frames vs Screws?



Rapid Panels™ with cement board attached to fully welded frame. Cement board sits flat.



Their panels with cement board attached to frames assembled with screws creating a gap.

When screws are used to assemble the frames, the screw head sticks out on the face of the frame. This makes the cement board not sit all the way down.

This creates a large gap. Since screws are randomly placed, the areas without screw heads under them will bow in. This can lead to cracking of the cement board. This can lead to cracks in the stucco or stone finish in the future.



Spot weld pry testing performed on Rapid Panels™.



Pry test result showing weld nugget ripping free from the steel without breaking the weld.

Compared to screws, welds are considerably stronger. In fact as you can see in these pictures, the weld is actually stronger than the steel .

This pry test shows the weld will not break, instead the steel is ripped apart but the weld stays intact.

Look closely at the competitor's frames. When screws are used, additional braces are needed at the corners to keep them square. Rapid Panels™ don't need these.





Big Ridge Rapid Panels™

DIY Done Right

# Easiest System On The Market So Easy A Kid Can Do It!

To prove just how easy our kits are to put together, we had our teenage boys put one together for us in *under 10 minutes!* You can see the video on our website at [www.bigridgeoutdoorkitchens.com/shop](http://www.bigridgeoutdoorkitchens.com/shop)

Here are a few things that make our outdoor kitchen kits so easy to put together in comparison to our competition.



Rapid Panels™ use heavy duty 12 gauge steel corner brackets installed for you. This ensures your modules stay square for good.



Their panels use a complicated and weaker system using steel stud pieces that can flex and allow your outdoor kitchen to become out of square.

Rapid Panels™ use heavy duty 12 gauge 90 degree squaring brackets. Big Ridge also pre-installs them while squaring your modules in a fixture to ensure they are accurately square. We leave them in place so when you get it, you simply screw the other panel to it. No need to square it again.

Other manufacturers send you scraps of steel studs. You need to square your modules and put these complicated parts together. Unfortunately, they don't hold square well.



One of the most difficult parts of the outdoor kitchen build is the bar counter. Even though it looks pretty straight forward, getting each module to match the next one while keeping everything level and square can be difficult. The installation of the hidden bar supports requires cuts in just the right locations.

That's why Rapid Panels™ bar counters come just like you see here, fully assembled. This picture shows the Rapid Panels™ Bar Counter With Cement Board, if you choose Rapid Panels™, they are also fully assembled (without cement board), and sent to you this way.

The competition sends you the panels and supports and the rest is up to you. This can be even more tricky with rounded or clipped corners.





# We Have Everything You Need

## Our Package Prices Can't Be Beat!



Top quality and amazing looks don't have to kill the bank. We offer everything you need for an amazing outdoor kitchen. We offer many amazing brands and offer them at competitive prices.

But you will save even more when you purchase your appliances and the outdoor kitchen from us. Package prices are lower than our already normally low published price.

Just try us, you will see why our non-published package prices can't be beat! If you don't see it on our website, there is a good chance we carry it. Just ask us, we would be happy to assist.

**FIREMAGIC®**

**LION**  
PREMIUM GRILLS

**Primo**  
GRILLS AND SMOKERS

**SUMMIT**  
APPLIANCE






# Frequently Asked Questions

**What if I already have my own appliances? Can you make an outdoor kitchen for me using my own appliances?** Yes, we make custom outdoor kitchens using appliances we supply or ones you already own.

**I need a special size to fit in my limited space, can you do that?** Yes, we make custom outdoor kitchens based on your needs. We offer free design assistance.

**I have a pergola and need to go around poles, can you do that?** Yes, we make custom outdoor kitchens based on your needs. We offer free design assistance.

**Do I have to use a insulating liner around my grill with your product?** No, we use only non-combustable materials which do not require the use of insulating liners.

**Do you offer additional services like stone?** Yes, we can offer the installation of stone or stucco. However, due to shipping it is likely to be less expensive if done on site by a contractor. If you would like more information on pricing just give us a call.

**How long will it take me to put my kit together?** It varies based on which kit you purchase and the complexity of the outdoor kitchen. A standard 10 foot Rapid Panel™ kit with cement board will take about 30 to 45 minutes to assemble, level, and be prepared to apply your finish materials. See our video at [www.bigridgeoutdoorkitchens.com/shop](http://www.bigridgeoutdoorkitchens.com/shop) to see a 10 foot outdoor kitchen assembled in under 10 minutes.

**Are the kits complete? What extras do I have to buy?** Our kits include everything you need to assemble the outdoor kitchen kits. Depending on which kit you purchase (with or without cement board) you will need cement board. All hardware is included.

We also offer vents which are required for gas appliance installation, as well as GFCI installation. The wiring, related materials, and connection are to be done on site and are not included.

Of course you will need to purchase your appliances, finish materials, etc. We would be happy to answer any questions.

**Will these frames support the weight of concrete counter tops and real stone?** Yes, we use heavy duty load bearing structural steel. The same steel used in commercial building construction. It will hold concrete, granite, natural stone, and heavy appliance with no issue. Call us for more information.

**What if I have problems with the assembly of my outdoor kitchen?** Here is where you will see a major difference between us and our competitors. We are available 6 days a week and during peak times 7 days a week. Call or email us and a live person will walk you through anything you need assistance with.

**Can I send you a hand drawn sketch of my project?** Napkins accepted! Yes, please send your sketch, don't worry what it looks like. We will walk you through the process and make the outdoor kitchen of your dreams. Send it to [sales@bigridgeoutdoorkitchens.com](mailto:sales@bigridgeoutdoorkitchens.com) or call us and we will help you.

**Do you really build every outdoor kitchen fully prior to shipping it?** Yes, we build the entire outdoor kitchen in our factory on level platforms. We assemble every module completely. If you purchase your appliances from us, we test fit every appliance. Otherwise, we use the dimensions you provide us. All you do is put it back the way we had it!

This way we know your outdoor kitchen will work as promised. In fact this is one of the reasons you will be able to assemble your outdoor kitchen in minutes rather than weeks.

**How long after I order will I get my outdoor kitchen?** Shipping times vary depending on current production volume. Our normal turnaround time is between 7 - 10 days. If you are concerned about timing, give us a call, we will do what we can to get it to you when you need it.

In a hurry? Our stock Rapid Panel™ Kits can ship within 72 hours when the appliances are purchased from us. Call us for more information on our stock kits.

**Do you offer Contractor Discounts?** Yes, we work with many contractors and welcome the opportunity to work with you. Call us and we will get you started in our contractor partner program. There are many advantages to our system. Give us a call today to find out more.

# Give Us A Call Today!

**Rapid Panels™ DIY Done Right**

Make the most of your free time. Enjoy the outdoors with family and friends. With Big Ridge, your outdoor living area will be the focal point of your home. Relax, Big Ridge will help you realize the outdoor kitchen of your dreams.



**BIG RIDGE™**



Outdoor Kitchens

**Big Ridge Outdoor Kitchens, LLC**

1582 New Highway 68  
Sweetwater, TN 37874

210-483-3114

**[www.diyoutdoor.kitchen](http://www.diyoutdoor.kitchen)**