

DIY Outdoor Living

DIY Done Right



Rapid Panel™ Outdoor Kitchen System

Outdoor Kitchen

BIG RIDGE™



Outdoor Kitchens

Inspiration Guide

www.diyoutdoor.kitchen

Where Do I Begin? We're Glad You Asked?

We know the outdoor kitchen design process can be overwhelming. That's why at Big Ridge, we offer more than great products. We offer solutions. We are with you every step of the way.

The outdoor kitchen industry is changing. That is a great thing if you are looking for an amazing outdoor entertaining area. But how do you sift through all the different designs to find just the right fit for your backyard and your family?

Big Ridge has been helping to create outdoor living areas that are not only amazing looking, they are affordable as well. And best of all, you can have your outdoor kitchen designed from the comfort of your own home. Our designers work with you via email and telephone calls when necessary.

The design process is simple. You tell our designers the area you have to work with, what types of appliances and storage you would like. Then we work with you on just the right design. Working back and forth via email, we will make changes to the drawings until you are happy with the design.



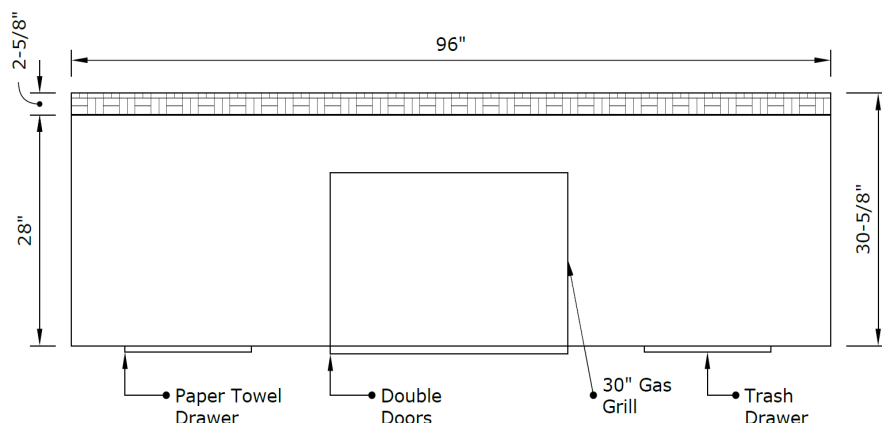
Then leave the rest to us, we turn your design into the masterpiece that will make your neighbor's jaw drop. And best of all, it is delivered directly to your home, hassle free!



Don't worry about high customization costs! Our process is designed to keep costs low. Our customers report savings of over 40% when compared to a site built outdoor kitchen!



Our Process



Step 1 Work With Our Designers To Make The Perfect Outdoor Kitchen For Free

Our designers work with you to put together your outdoor kitchen the way you want it. If you don't know what you want yet, that's okay, we will help you through it.

We will revise it until you are happy with it. Then on to step 2.

Step 2

Assemble Your Rapid Panel™ Frames. Then Install Your Doors And Appliances.

Easily reassemble your Rapid Panel™ frames. Since every outdoor kitchen is preassembled in our factory, you just put it back together the way we had it. This 8' kitchen took under 10 minutes to reassemble.

Next, install your appliances and you are ready to put the finish materials on.



Step 3

Apply Your Finish Materials And Hook Up Utilities. Now Enjoy Your Outdoor Kitchen!

Just finish with your choice of stone, stucco, or any other finish you desire.

On an outdoor kitchen this size, you can finish the stone work in a weekend. This is the fastest way to build your outdoor kitchen. Now get your family and friends and enjoy the great outdoors!



Let's Find That Perfect

DESIGN

About This Guide

This design guide shows our most popular outdoor kitchen plans. You can purchase them as they are. However, most of our clients prefer to change the stock plans to meet their needs.

Any time you hear the word "Customize" your mind only hears \$\$\$\$\$\$. Don't worry, Big Ridge specializes in making custom outdoor kitchens without the custom prices. Our talented team uses specialized equipment to quickly make your custom outdoor kitchen economically and with the highest quality in the industry. After all, our outdoor kitchens are on-of-a-kind, just like you!

Sometimes, buying your appliances before designing your outdoor kitchen can lead to problems. If you don't have enough space for what you want, you may not be able to fit it all in. Often there are alternatives to get just what you want. We can help you design your outdoor kitchen first and save a lot of hassle later.

Let our experts assist you with just the right appliance package for your needs and your budget. Big Ridge carries Lynx, Sedona, Fire Magic, AOG, Blaze, Lion, Primo, Summerset, AMG, Summit and many other appliance brands. **We make amazing package deals that are lower than advertised in our store. Give us a try before you buy!**

Most of all, have fun!



Alexandria

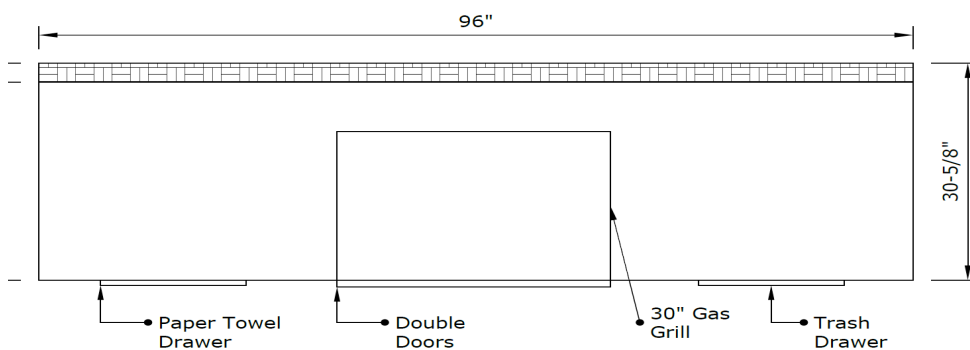
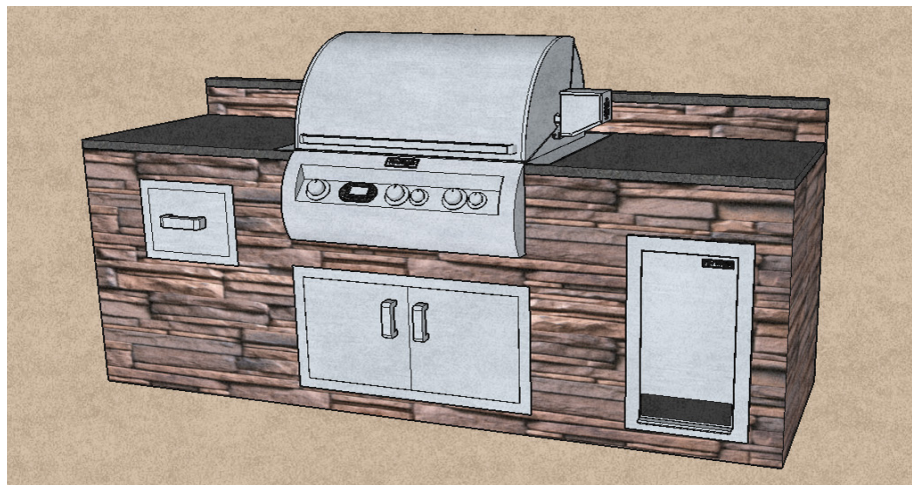


Alexandria Linear

- Perfect for small spaces
- Features Roll Out Trash Bin
- Built-in Paper Towel Holder
- Double Storage Doors
- Stylish 6" Back Splash
- Plenty Of Counter To Prepare Meals
- 8 Feet Long



This outdoor kitchen is designed to house up to a 42" grill like our Fire Magic Echelon 36" grill below. Already have a grill or need a bigger grill opening? No problem, we will build it to fit your



*NOTE- Dimensions only include the size of the steel frame. Finishing materials increase these dimensions.



Augusta

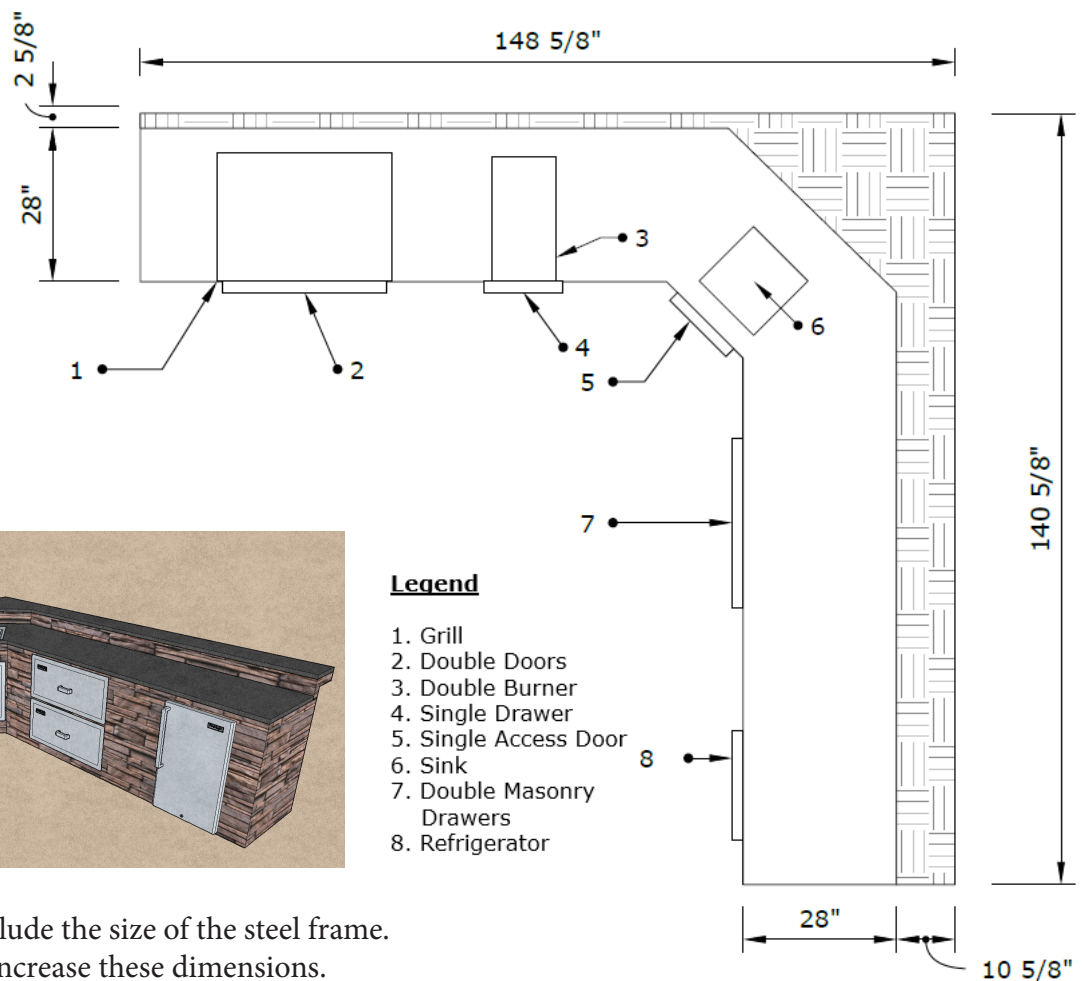
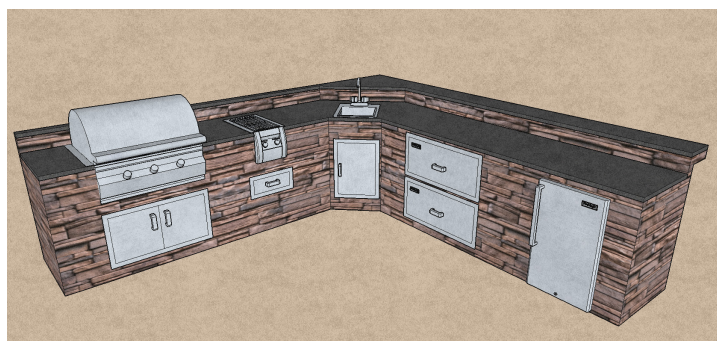


The Augusta L-Shape

- Features Double Masonry Doors
- Convenient Corner Sink
- Double Side Burner
- Great for Decks
- Split Bar Overhang & Stylish 6" Back Splash
- Plenty Of Counter To Prepare Meals
- Double Storage Doors Below Grill



This outdoor kitchen is designed to house up to a 42" grill like our Fire Magic Aurora 36" grill below. Already have a grill or need a bigger grill opening? No problem, we will build it to fit your appliances.



*NOTE- Dimensions only include the size of the steel frame.
Finishing materials increase these dimensions.



Austin

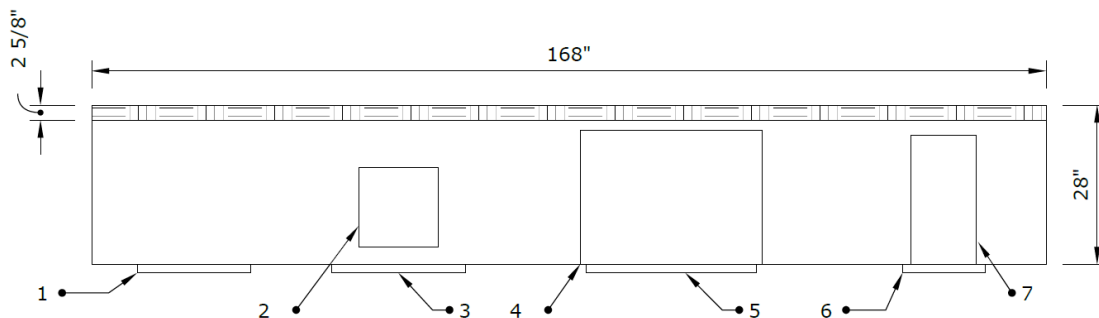
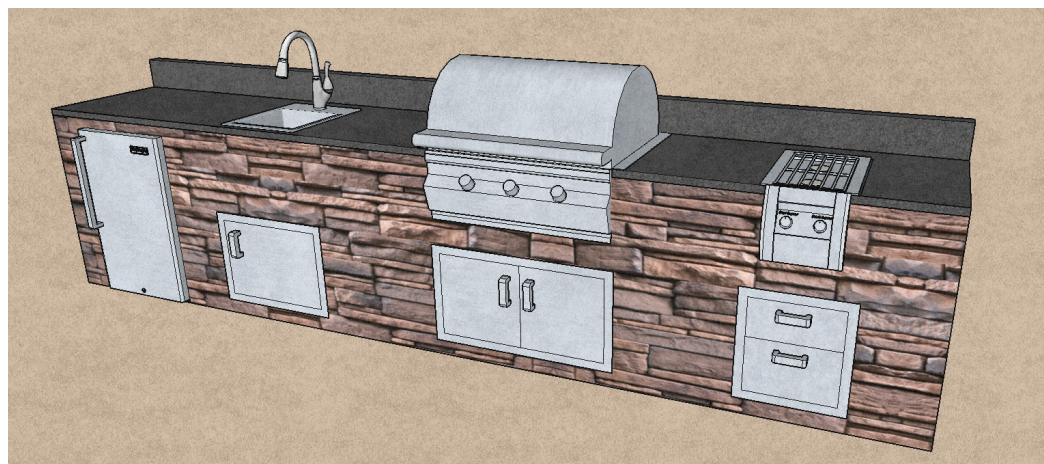


The Austin Linear

- Features Lots of Storage
- Handy Prep Sink
- Double Side Burner
- Generous 14' Length
- Full 6" Back Splash
- Beautiful Glass Beverage Refrigerator
- Double Storage Doors Below Grill



This outdoor kitchen is designed to house up to a 42" grill like our Lion 40" grill below. Already have a grill or need a bigger grill opening? No problem, we will build it to fit your appliances.



Legend

1. Refrigerator
2. Sink
3. Single Access Door
4. Grill
5. Double Access Doors
6. Double Drawers
7. Double Burner

*NOTE- Dimensions only include the size of the steel frame.
Finishing materials increase these dimensions.



Bay Minette



The Bay Minette U-Shape

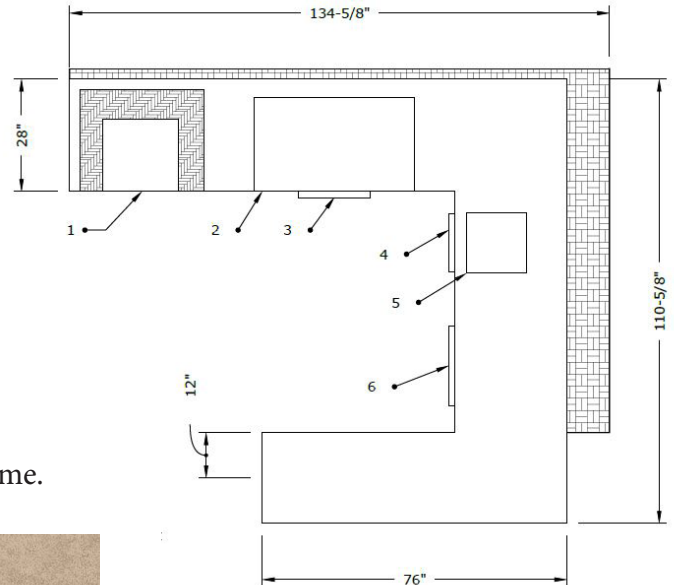
- Features a Unique U-shaped Layout
- Inviting Design
- Drop Down Power Burner
- Convenient Sink
- Access Doors
- Bar Overhang & Level Overhang
- Plenty Of Seating And Food Presentation Room
- Refrigerator For Entertaining



This outdoor kitchen is designed to house up to a 42" grill like our Fire Magic Aurora 36" grill below. Already have a grill or need a bigger grill opening? No problem, we will build it to fit your appliances.





*NOTE- Dimensions only include the size of the steel frame. Finishing materials increase these dimensions.



Legend:

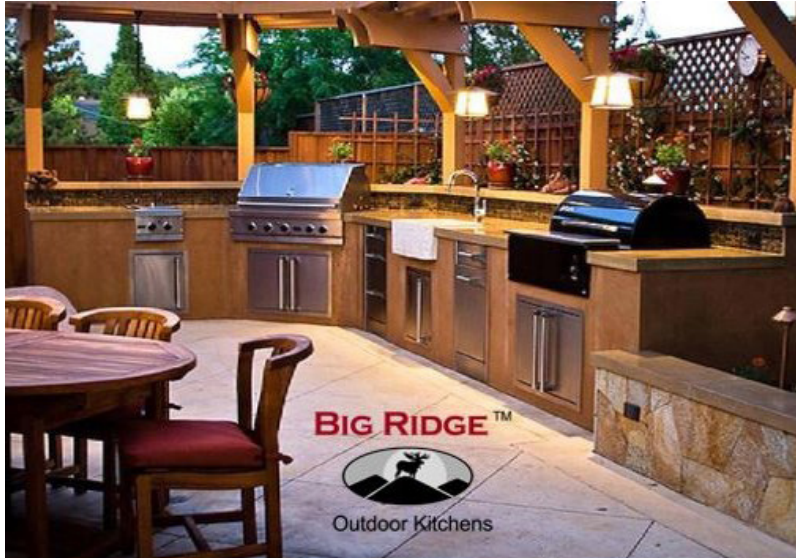
1. Drop Down Power Burner
2. 40" Lion Grill
3. Horizontal Door
4. Vertical Door
5. Sink
6. Refrigerator

 - 42" Bar Height

 - 24" Burner Platform Height



Belle Fontaine



The Belle Fontaine L-Shape

- Features a Unique L-shaped Layout
- Luxurious Design
- Double Side Burner
- Upgraded Custom Sink
- Southern Charm
- Full 6" Back Splash
- Plenty Of Storage
- Charcoal and Gas Grills

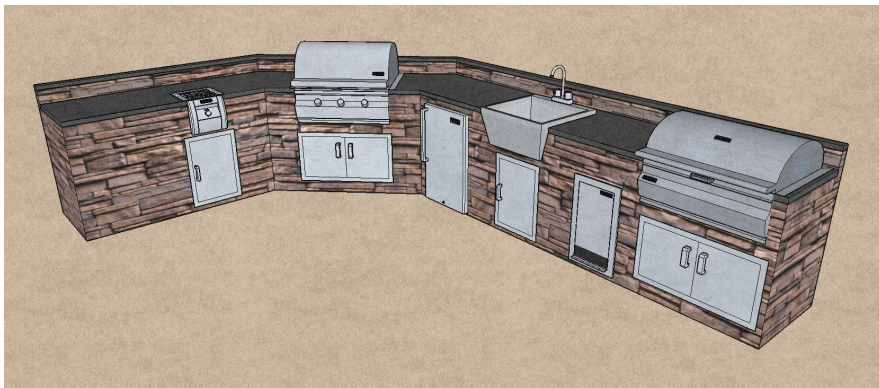
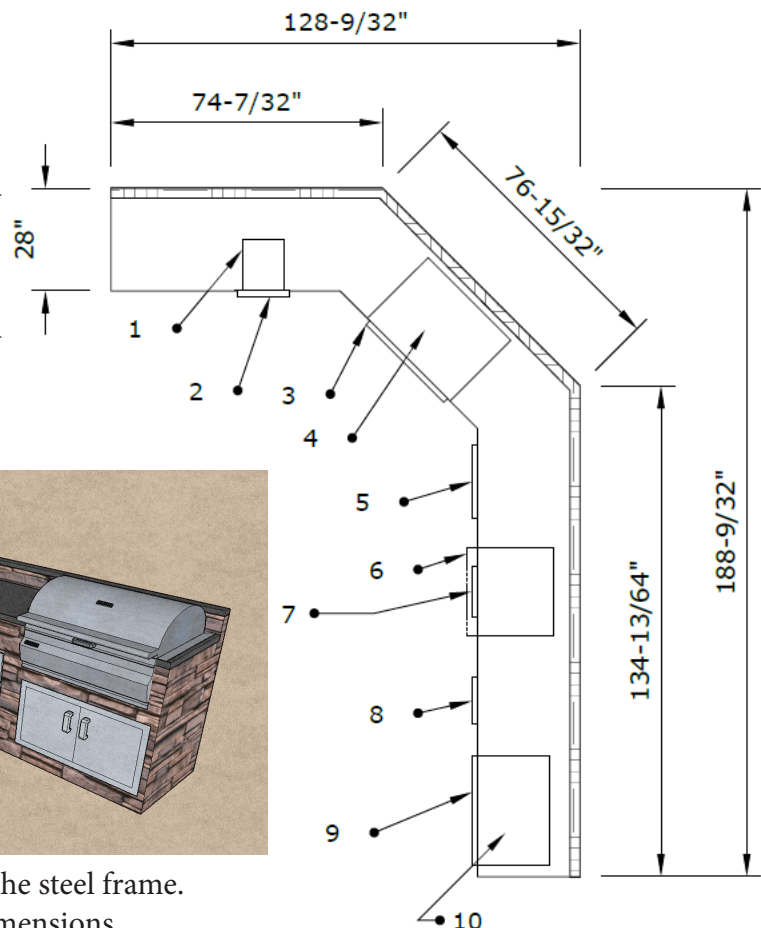


This outdoor kitchen is designed to house up to a 42" grill like our Lion 40" grill below. Already have a grill or need a bigger grill opening? No problem, we will build it to fit your appliances.



Legend

1. Single Burner
2. Single Access Door
3. Double Access Door
4. Grill
5. Refrigerator
6. Farm House Sink
7. Single Access Door
8. Trash Container
9. Double Access Door
10. Charcoal Grill



*NOTE- Dimensions only include the size of the steel frame.
Finishing materials increase these dimensions.



Brighton

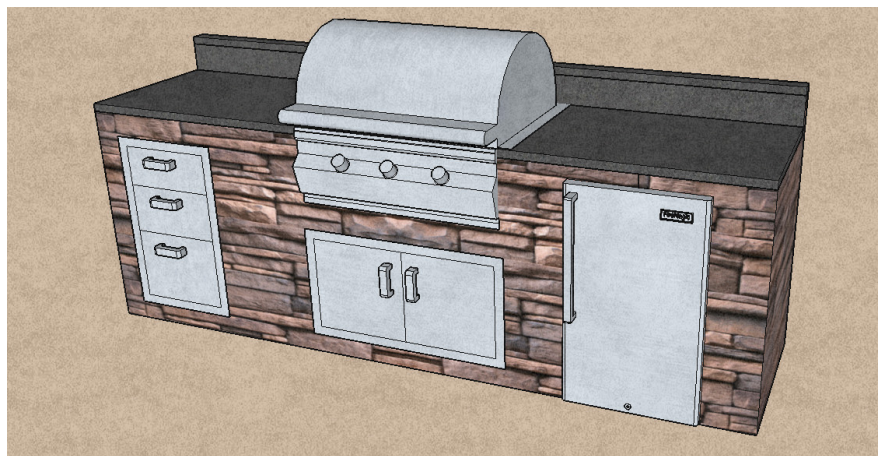


The Brighton Linear

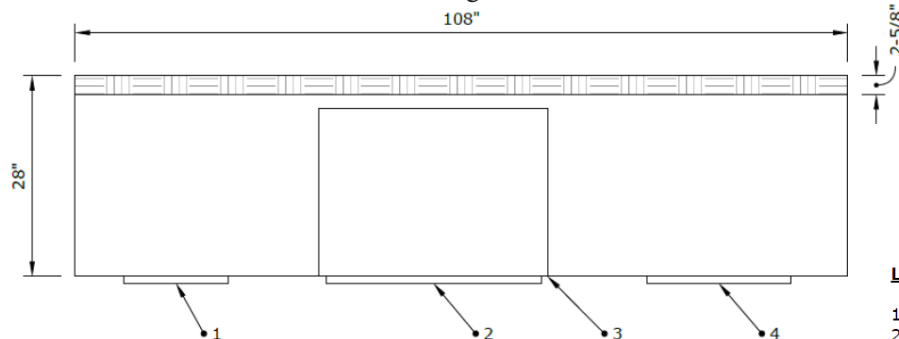
- Features a Small but Well Appointed Design
- Triple Storage Drawers
- Beverage Refrigerator
- Double Storage Doors
- 6" Back Splash
- Prep and Serve Area



This outdoor kitchen is designed to house up to a 42" grill like our Fire Magic Echelon 36" grill below. Already have a grill or need a bigger grill opening? No problem, we will build it to fit your appliances.



***NOTE-** Dimensions only include the size of the steel frame. Finishing materials increase these dimensions.



Legend

1. Triple Drawers
2. Double Doors
3. Grill
4. Refrigerator



Dakota

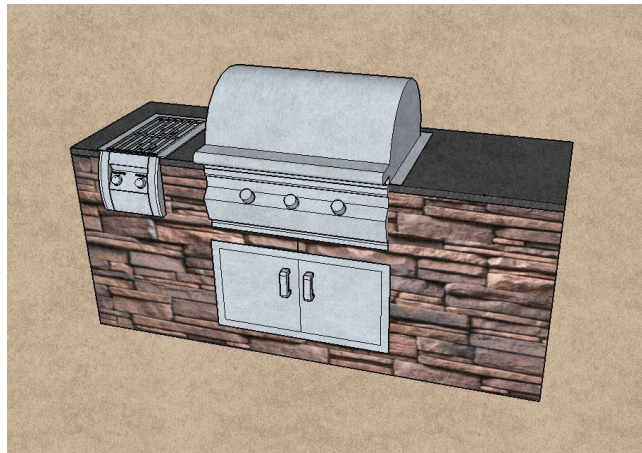


The Dakota Linear

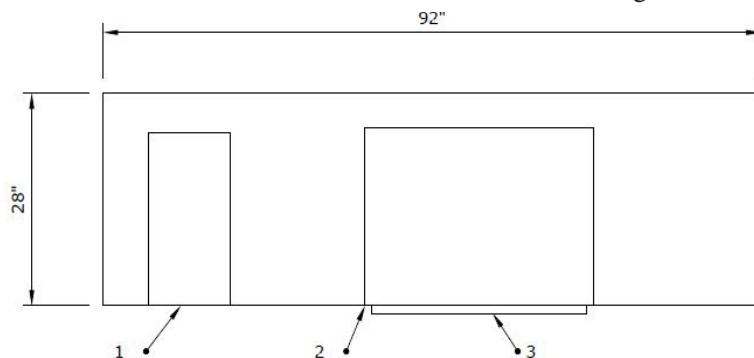
- Features a Double Side
- Perfect for Small Spaces
- Double Storage Doors
- Clean and Simple Design
- Counter space for Meal Preparation



This outdoor kitchen is designed to house up to a 42" grill like our Fire Magic Aurora 36" grill below. Already have a grill or need a bigger grill opening? No problem, we will build it to fit your appliances.



***NOTE-** Dimensions only include the size of the steel frame. Finishing materials increase these dimensions.



Legend

1. Double Burner
2. Grill
3. Double Access Doors



Fort Loudoun

The Fort Loudon L-Shape

- Features a Popular L-shaped Layout
- Ceramic Smoker Grill
- Drop Down Power Burner
- Handy Prep Sink
- Double Storage Doors
- Full 6" Back Splash
- Plenty Of Counter To Prepare Meals



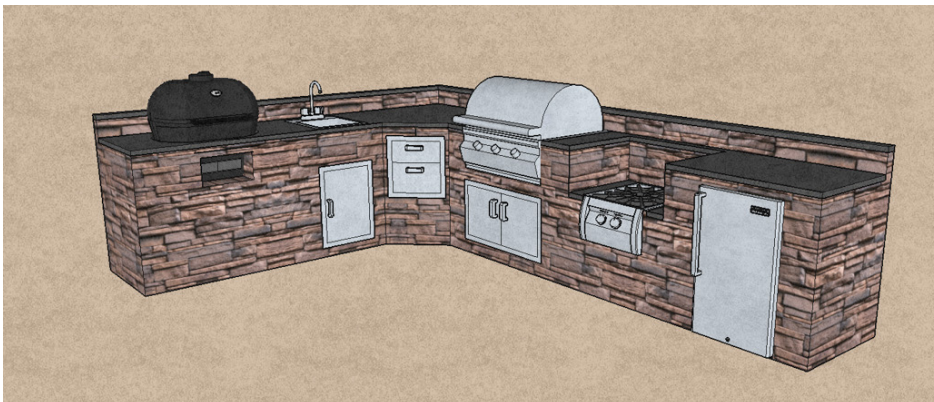
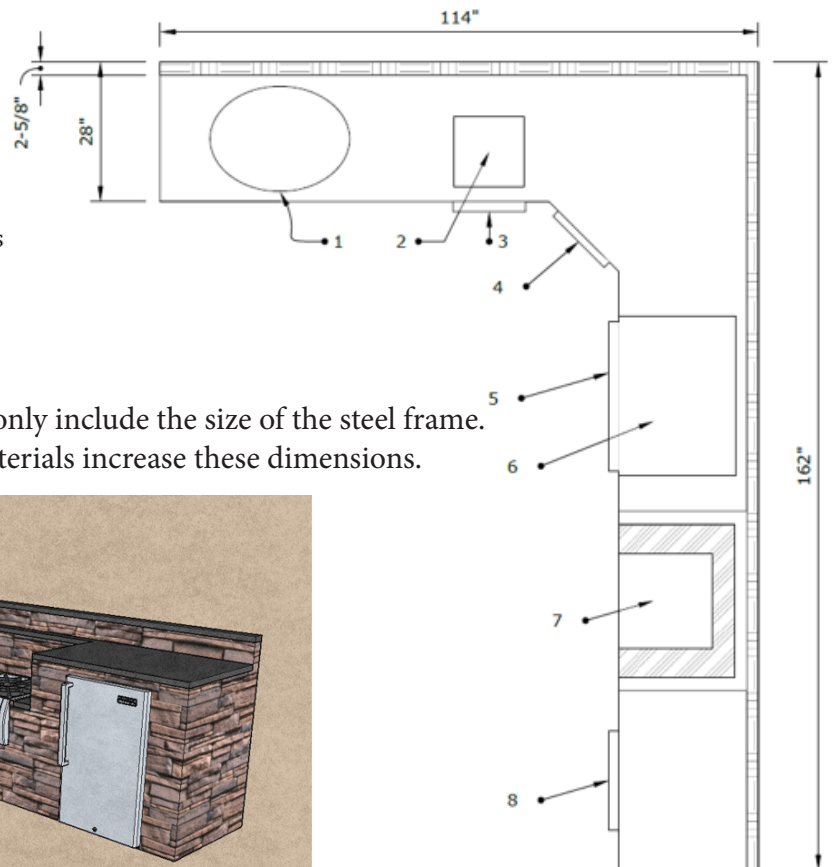
This outdoor kitchen is designed to house up to a 42" grill like our Lion 40" grill below. Already have a grill or need a bigger grill opening? No problem, we will build it to fit your appliances.



Legend

1. Primo Grill
2. Sink
3. Single Access Door
4. Dual Drawers
5. Double Access Doors
6. Grill
7. Power Burner
8. Refrigerator

*NOTE- Dimensions only include the size of the steel frame.
Finishing materials increase these dimensions.





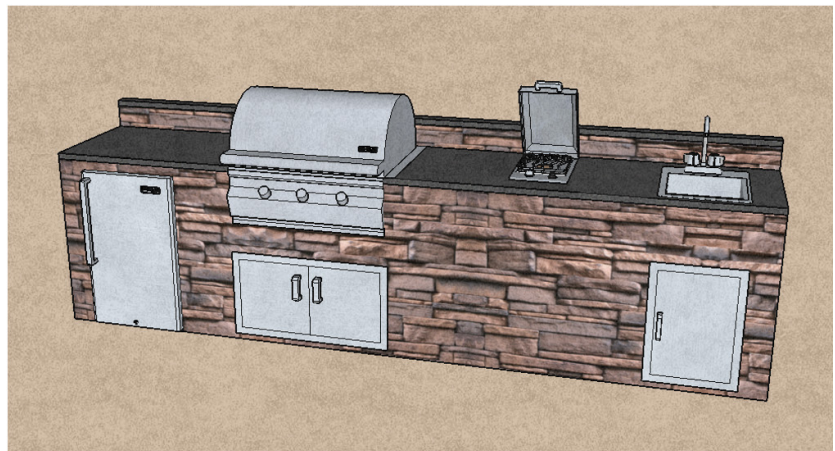
Georgetown

The Georgetown Linear

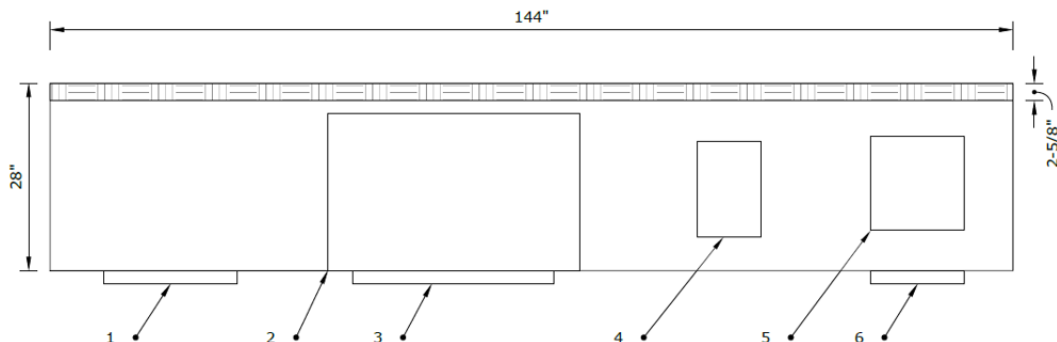
- Features a Clean Linear Layout
- Stylish Refrigerator
- Convenient Sink
- Single Side Burner
- Access Doors
- 6" Back Splash
- Perfect For Tight Spaces



This outdoor kitchen is designed to house up to a 42" grill like our Fire Magic Echelon 36" grill below. Already have a grill or need a bigger grill opening? No problem, we will build it to fit your appliances.



***NOTE-** Dimensions only include the size of the steel frame.
Finishing materials increase these dimensions.



Legend

1. Refrigerator
2. Gas Grill
3. Double Doors
4. Single Burner
5. Sink
6. Single Access Door



Monterrey



The Monterrey L-Shape

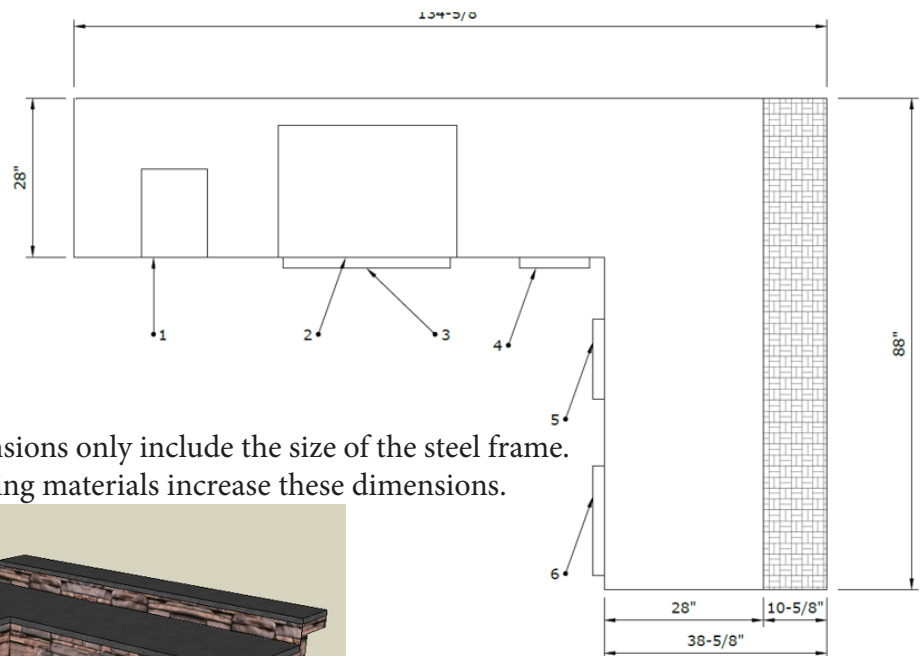
- Features a Spacious L-shaped Layout
- Beverage Refrigerator
- Double Side Burner
- Double Storage Doors
- Split Bar Overhang
- Ample Seating For Family and Friends



This outdoor kitchen is designed to house up to a 42" grill like our Fire Magic Echelon 36" grill below. Already have a grill or need a bigger grill opening? No problem, we will build it to fit your appliances.

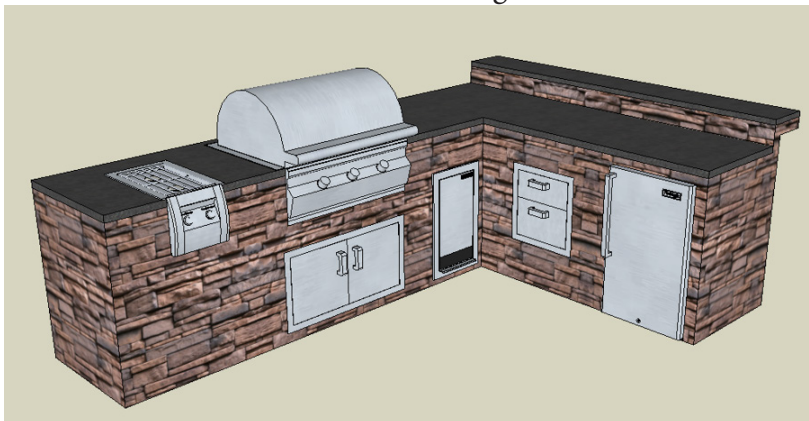


***NOTE-** Dimensions only include the size of the steel frame. Finishing materials increase these dimensions.



Legend

1. Side burner
2. Grill
3. Double Doors
4. Trash Container
5. Double Drawer
6. Refrigerator





Montgomery

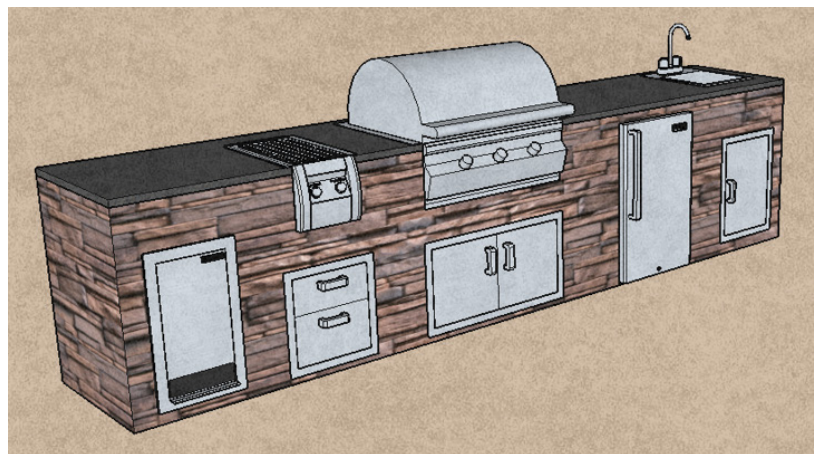


The Montgomery Linear

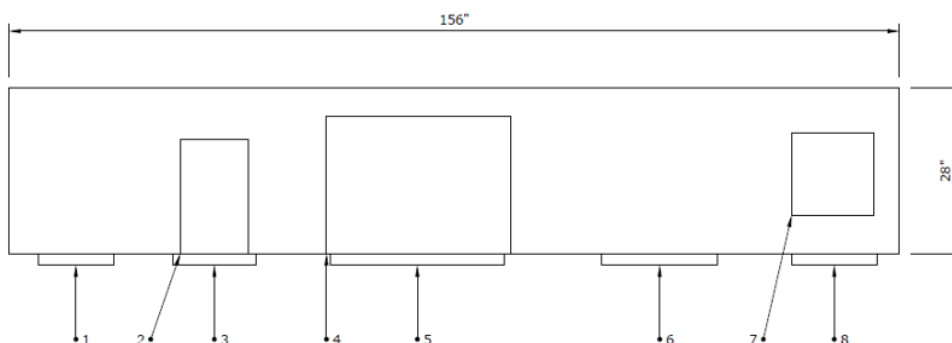
- Features a Unique U-shaped Layout
- Inviting Design
- Double Burner
- Convenient Sink
- Access Doors
- 6" Back Splash
- Plenty Of Counter To Prepare Meals



This outdoor kitchen is designed to house up to a 42" grill like our Fire Magic Echelon 36" grill below. Already have a grill or need a bigger grill opening? No problem, we will build it to fit your appliances.



*NOTE- Dimensions only include the size of the steel frame.
Finishing materials increase these dimensions.



Legend

1. Trash
2. Double Burner
3. Double Drawer
4. 32" Fire Magic A660i gas grill
5. Double Doors
6. Fridge
7. Sink
8. Single Access Door



North Shore

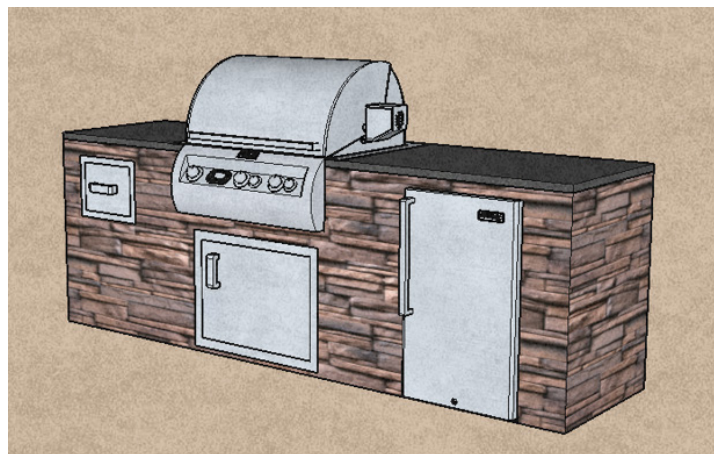


The North Shore Linear

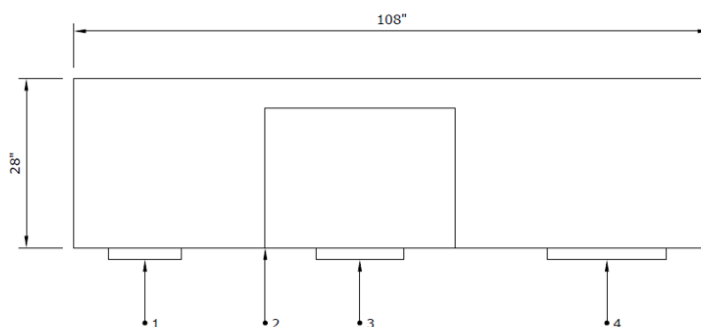
- Features a Simple but Complete Design
- Enclosed Paper Towel Holder
- Handy Beverage Refrigerator
- Access Door
- Ample Counter Space
- Great for Small Spaces



This outdoor kitchen is designed to house up to a 42" grill like our Fire Magic Aurora 36" grill below. Already have a grill or need a bigger grill opening? No problem, we will build it to fit your appliances.



***NOTE-** Dimensions only include the size of the steel frame.
Finishing materials increase these dimensions.



Legend

1. Paper Towel Holder
2. 32" Fire Magic A660i gas grill
3. Single Access Door
4. Refrigerator



San Antonio

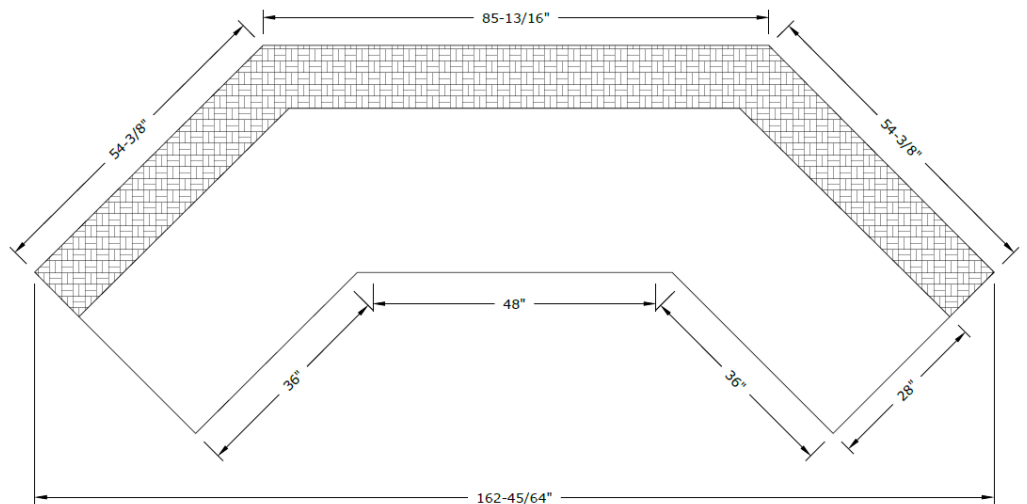


The San Antonio L-Shape

- Features a Unique Angled Design
- Plenty Of Seating
- Roll-out Trash Receptacle
- Double Storage Doors
- Bar Overhang
- Beverage Refrigerator
- Single Access Door With Tank Holder

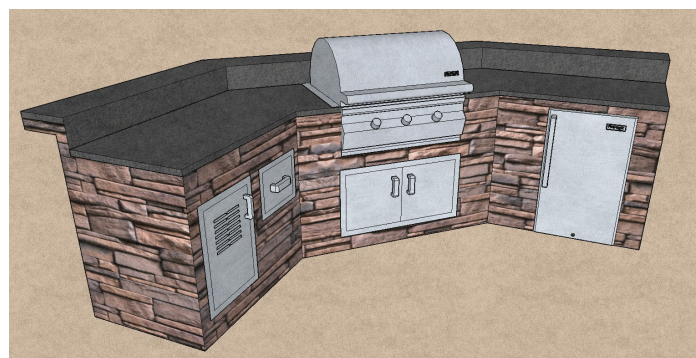


This outdoor kitchen is designed to house up to a 42" grill like our Lion 40" grill below. Already have a grill or need a bigger grill opening? No problem, we will build it to fit your appliances.



Legend

1. Single Access Door with tank holders
2. Paper Towel Holder
3. Double Access Door
4. Grill
5. Refrigerator



*NOTE- Dimensions only include the size of the steel frame. Finishing materials increase these dimensions.



Sweetwater

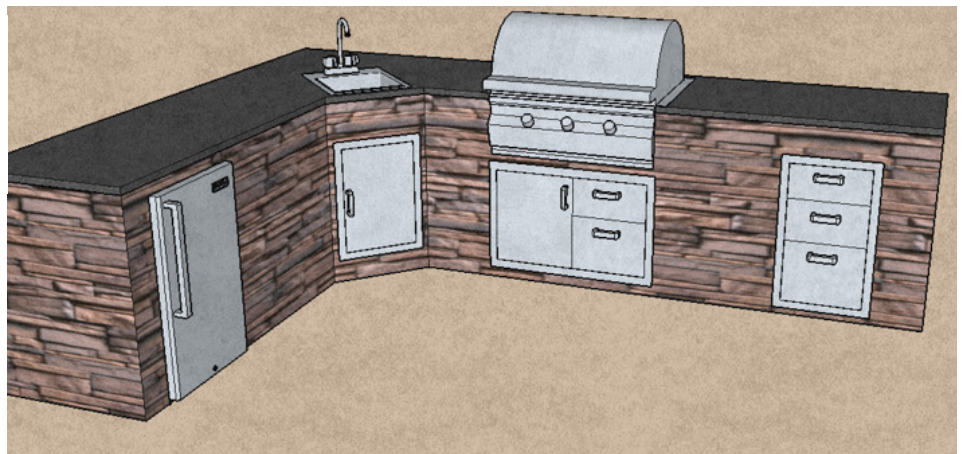
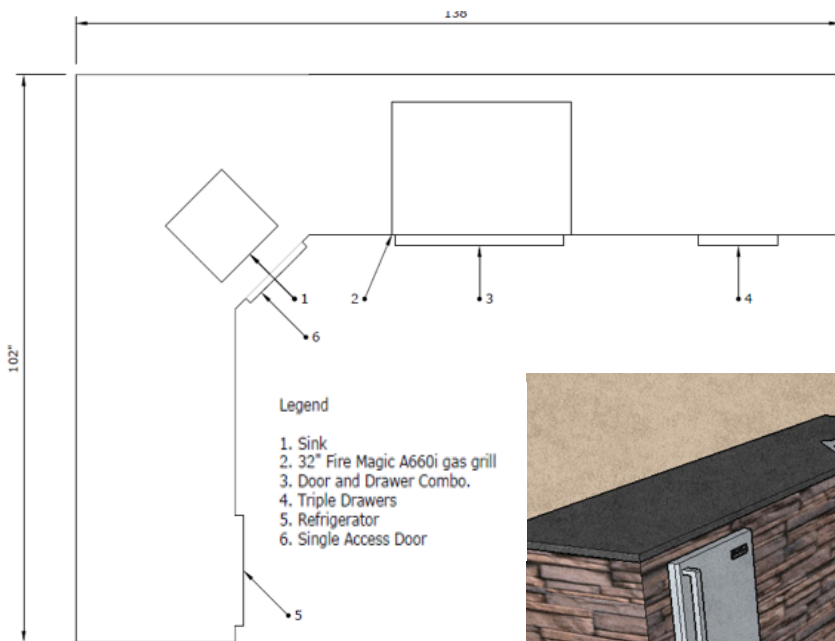


The Sweetwater L-Shape

- Features a Convenient L-shaped Layout
- Triple Drawers
- Inviting Design
- Convenient Corner Sink
- Door / Double Drawer combo
- Refrigerator
- Plenty Of Counter Space



This outdoor kitchen is designed to house up to a 42" grill like our Lion 40" grill below. Already have a grill or need a bigger grill opening? No problem, we will build it to fit your appliances.



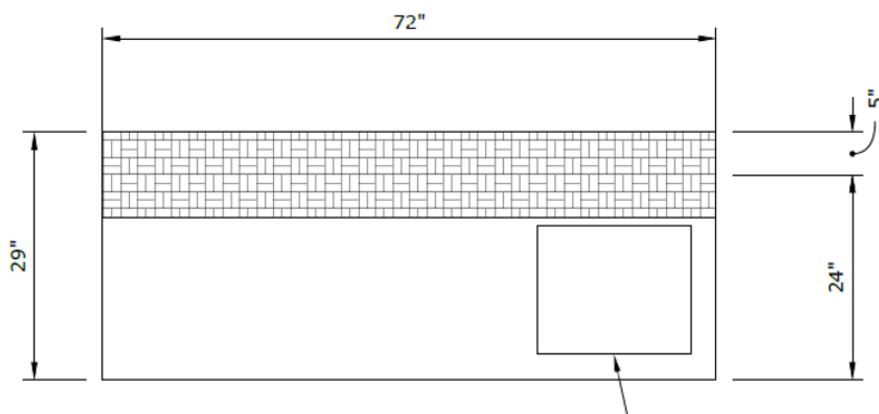
*NOTE- Dimensions only include the size of the steel frame.
Finishing materials increase these dimensions.



72" Patio Wet Bar

Challenger's 72" Patio Wet Bar

- Features a Great Entertaining Setup
- Bar Sink
- Plenty of Storage
- 3 Large Access Doors
- Raised Bar for Guests
- Self Contained Water System Available, No Plumbing or Drain Necessary
- Sets Up In Minutes





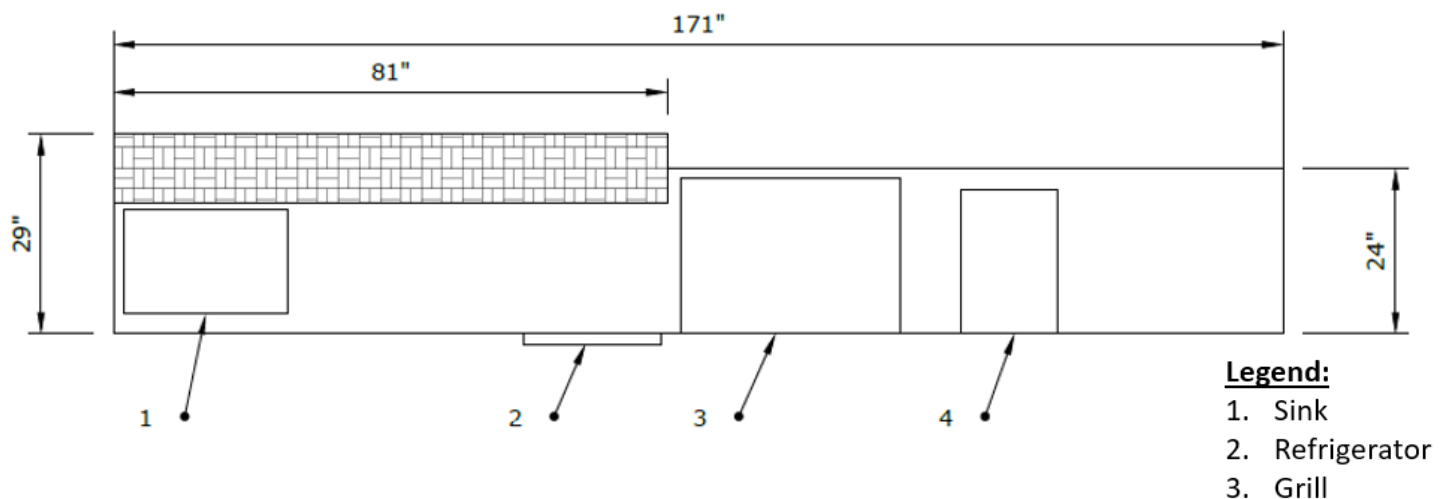
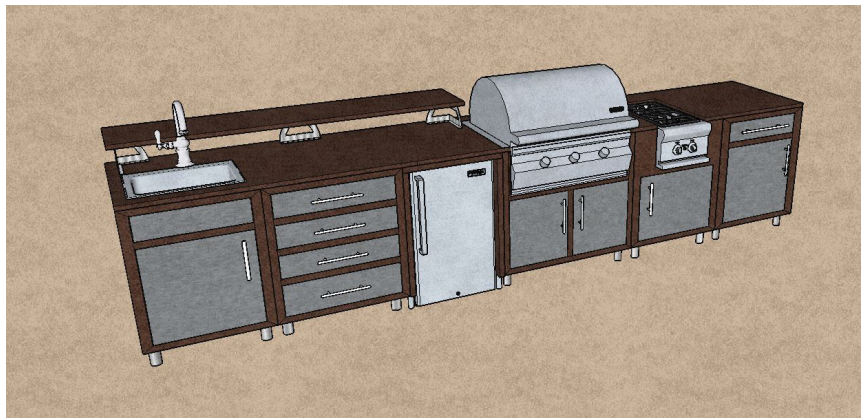
Pineridge



Challenger Pineridge

- Features Clean and Modern Linear Design
- Large Grill
- Handy Beverage Refrigerator
- Tons of Storage
- Plenty Of Counter and Bar Space
- Raised Bar for Guests
- Sets Up In Minutes
- Complete Outdoor Kitchen Including Counter Tops

This outdoor kitchen is designed to house up to a 42" grill like our Lion 40" grill below. Already have a grill or need a bigger grill opening? No problem, we will build it to fit your appliances.





Big Ridge Rapid Panels™

DIY Done Right

CH1130NB (the MVP)

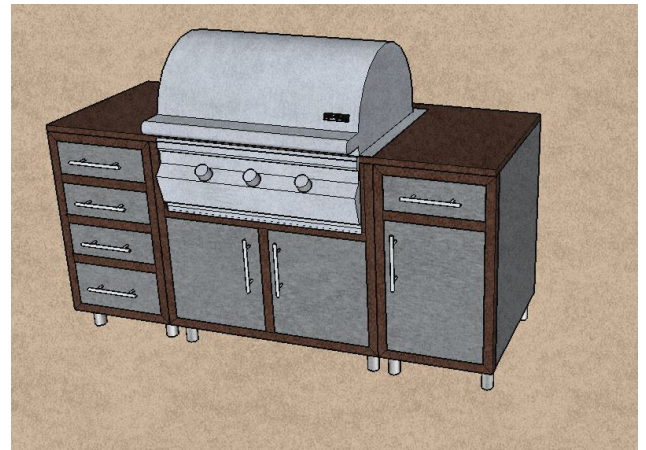


Challenger CH1130NB

- Features a Simple but Complete Design
- Plenty of Storage Space
- Lots of Drawers
- Great for Small Spaces
- Sets Up In Minutes
- Complete Outdoor Kitchen Including Counter Tops



This outdoor kitchen is designed to house up to a 42" grill like our Fire Magic Aurora 36" grill below. Already have a grill or need a bigger grill opening? No problem, we will build it to fit your appliances.





CHQ09540

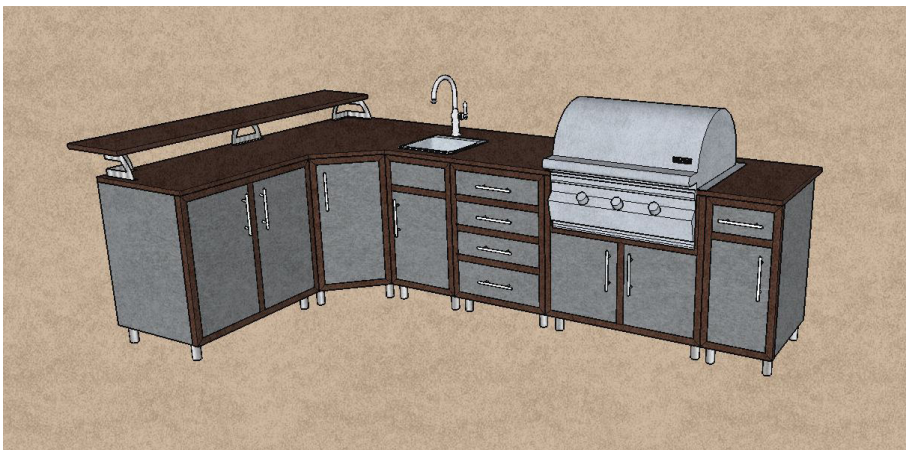
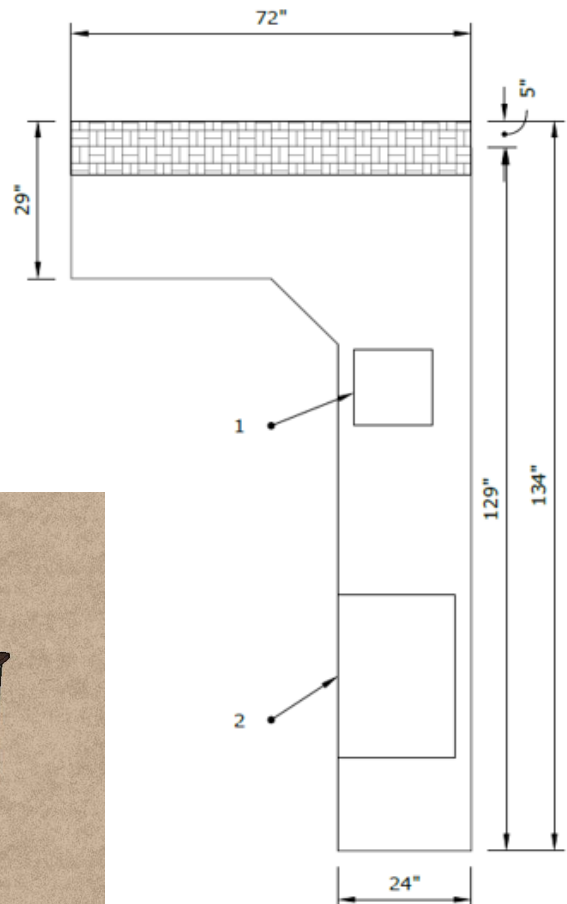
Challenger CHQ09540



This outdoor kitchen is designed to house up to a 42" grill like our Fire Magic Echelon 36" grill below. Already have a grill or need a bigger grill opening? No problem, we will build it to fit your appliances.

**Legend:**

1. Sink
2. Grill





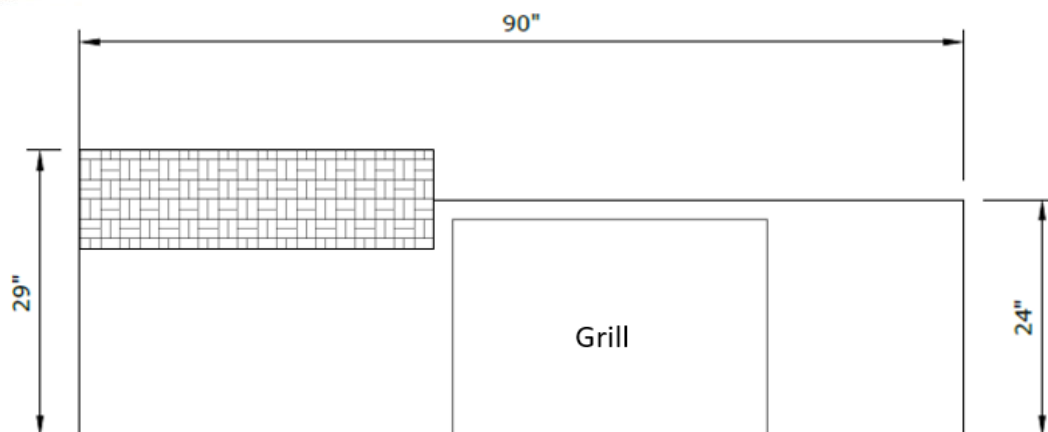
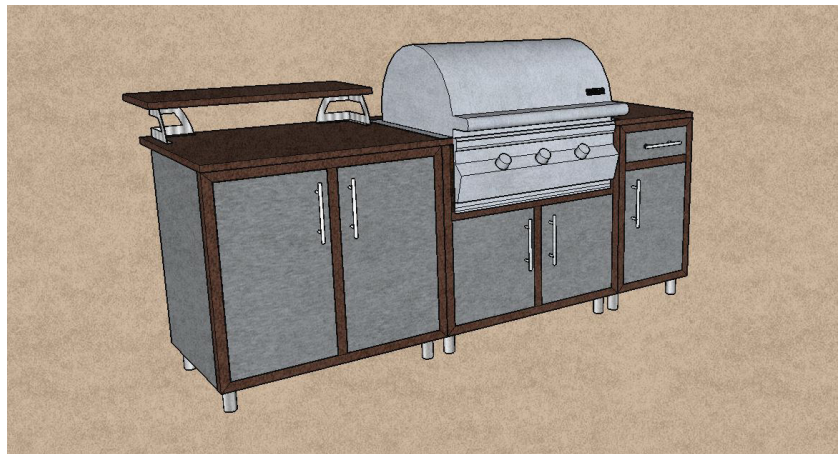
CHQ5540



Challenger CHQ5540

- Features a Simple but Complete Design
- Great Grilling Island
- Several Storage Areas
- Plenty Of Counter Space
- Great for Small Spaces
- Sets Up In Minutes
- Complete Outdoor Kitchen Including Counter Tops

This outdoor kitchen is designed to house up to a 42" grill like our Fire Magic Aurora 36" grill below. Already have a grill or need a bigger grill opening? No problem, we will build it to fit your appliances.



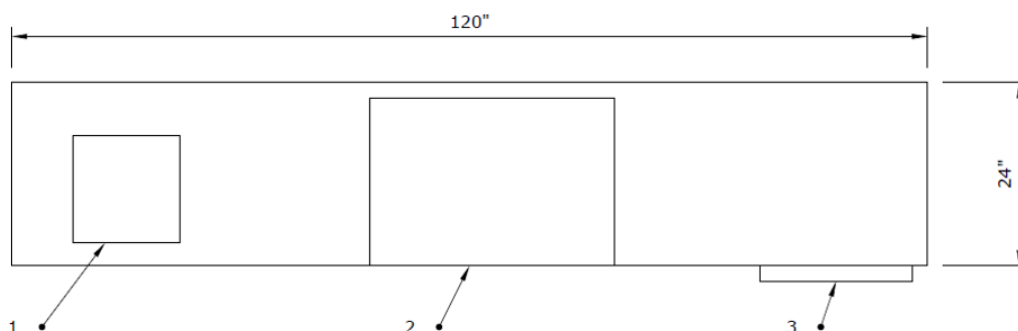
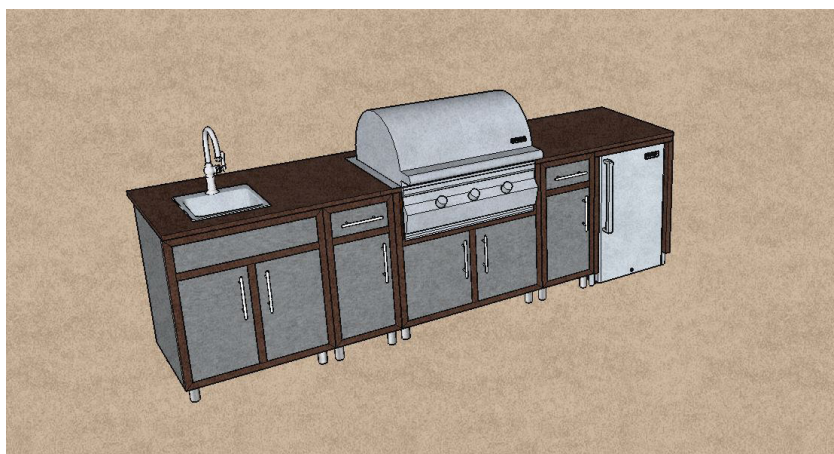
CHQ10540

Challenger CHQ10540

- Features a Well Appointed Linear Design
- Large Amounts of Storage
- Handy Refrigerator
- Plenty Of Counter Space
- Everything You Need To Entertain
- Sets Up In Minutes
- Complete Outdoor Kitchen Including Counter Tops



This outdoor kitchen is designed to house up to a 42" grill like our Fire Lion 40" grill below. Already have a grill or need a bigger grill opening? No problem, we will build it to fit your appliances.



Legend

1. Sink
2. Grill
3. Refrigerator



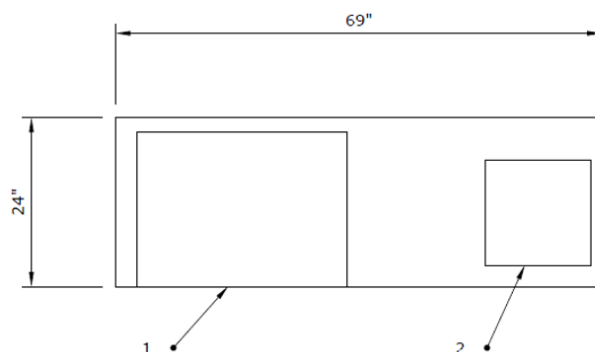
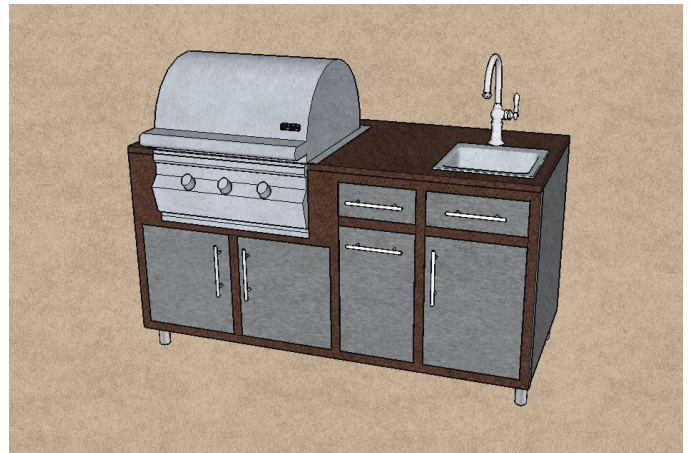
COGI 26 S P



Challenger COGI 26SP

- Full Featured Yet Compact Design
- Large Amounts of Storage
- Handy Sink
- Large Grill For Entertaining
- Perfect For Small Spaces
- Very Portable
- Sets Up In Minutes
- Complete Outdoor Kitchen Including Counter Tops

This outdoor kitchen is designed to house up to a 42" grill like our Lion 40" grill below. Already have a grill or need a bigger grill opening? No problem, we will build it to fit your appliances.



Legend:

1. Grill
2. Sink



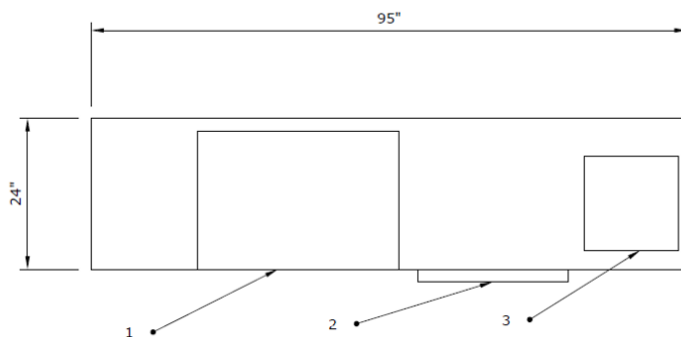
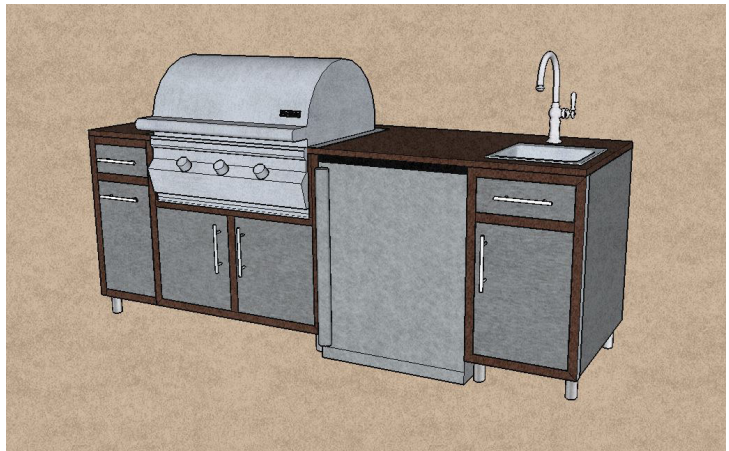
COGI 32 RS P



Challenger COGI 32 RS P

- Full Features In A Medium Footprint
- Large Amounts of Storage
- Handy Sink
- Beverage Refrigerator
- Perfect For Pool Areas
- Sets Up In Minutes
- Complete Outdoor Kitchen Including Counter Tops

This outdoor kitchen is designed to house up to a 42" grill like our Lion 40" grill below. Already have a grill or need a bigger grill opening? No problem, we will build it to fit your appliances.



Legend:

1. Grill
2. Refrigerator
3. Sink



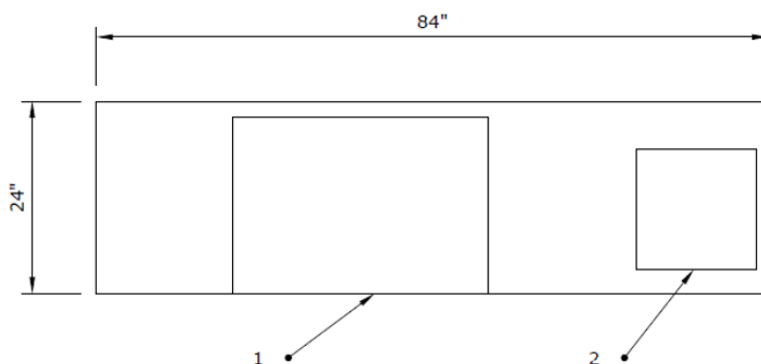
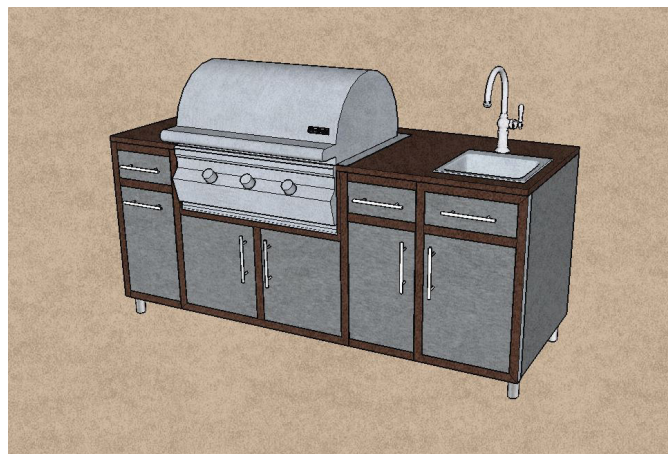
COGI 32 S Deluxe P

Challenger COGI 32 S Deluxe P

- Features a Compact Linear Design
- Large Amounts of Storage
- Handy Sink
- Plenty Of Counter Space
- Works Well In Tight Backyards
- Sets Up In Minutes
- Complete Outdoor Kitchen Including Counter Tops



This outdoor kitchen is designed to house up to a 42" grill like our Lion 40" grill below. Already have a grill or need a bigger grill opening? No problem, we will build it to fit your appliances.



Legend:

1. Grill
2. Sink



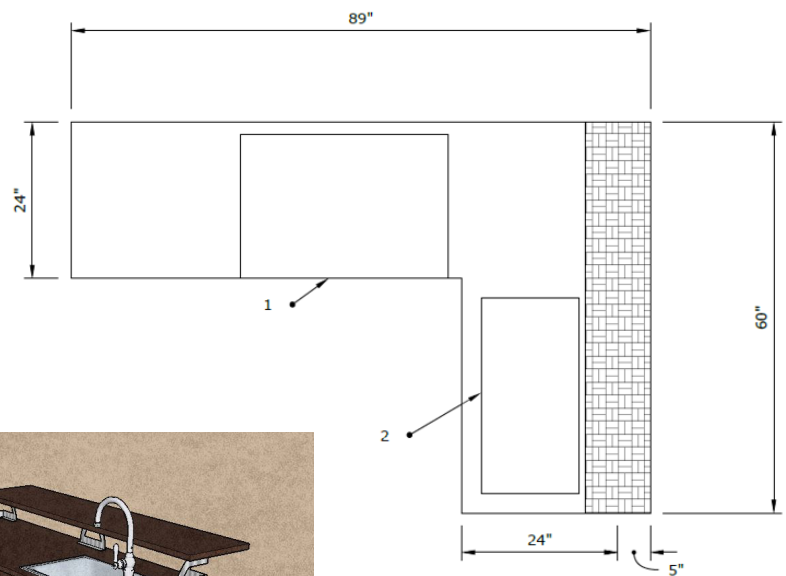
Power L



Challenger Power L

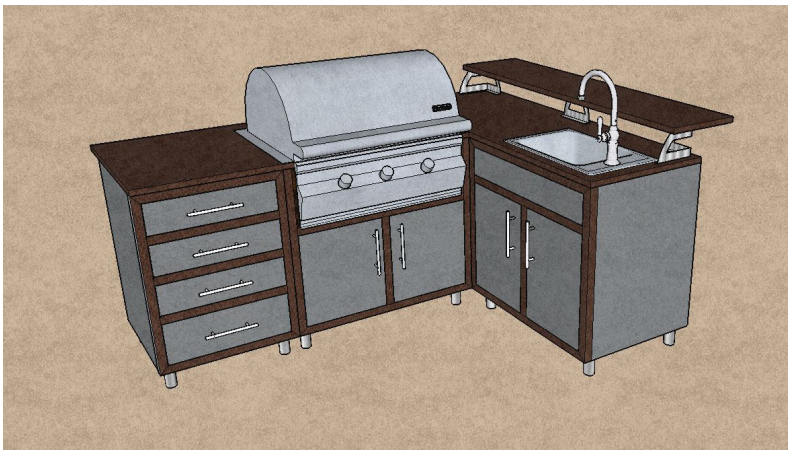
- Features a Compact L-Shaped Design
- Large Amounts of Storage
- Deluxe Sink And Faucet
- Plenty Of Counter Space
- Inviting Bar
- Sets Up In Minutes
- Complete Outdoor Kitchen Including Counter Tops

This outdoor kitchen is designed to house up to a 42" grill like our Fire Magic Aurora 36" grill below. Already have a grill or need a bigger grill opening? No problem, we will build it to fit your appliances.



Legend:

1. Grill
2. Sink



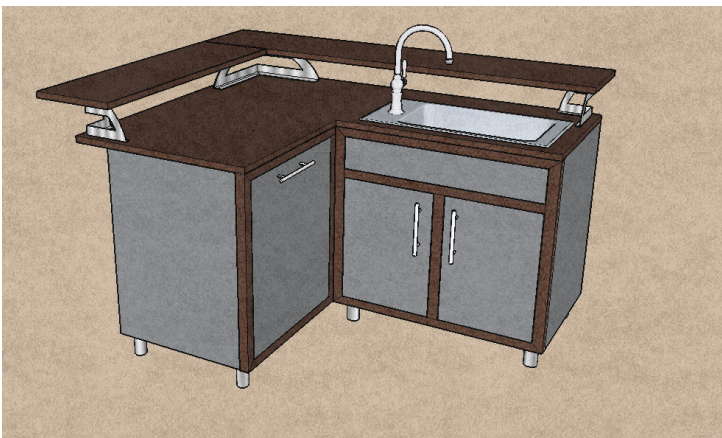
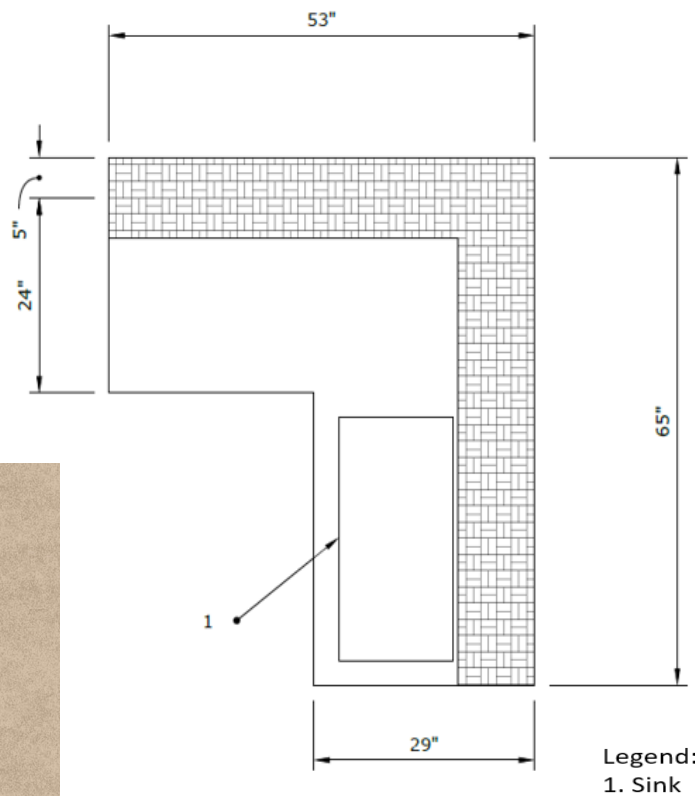


Pool Side Bar



Challenger Pool Side Bar

- Features a Tight L-Shaped Design
- Large Amounts of Storage
- Plenty Of Counter Space
- Bar Seating For Entertaining Guests
- Deluxe Sink and Faucet
- Sets Up In Minutes
- Complete Outdoor Kitchen Including Counter Tops





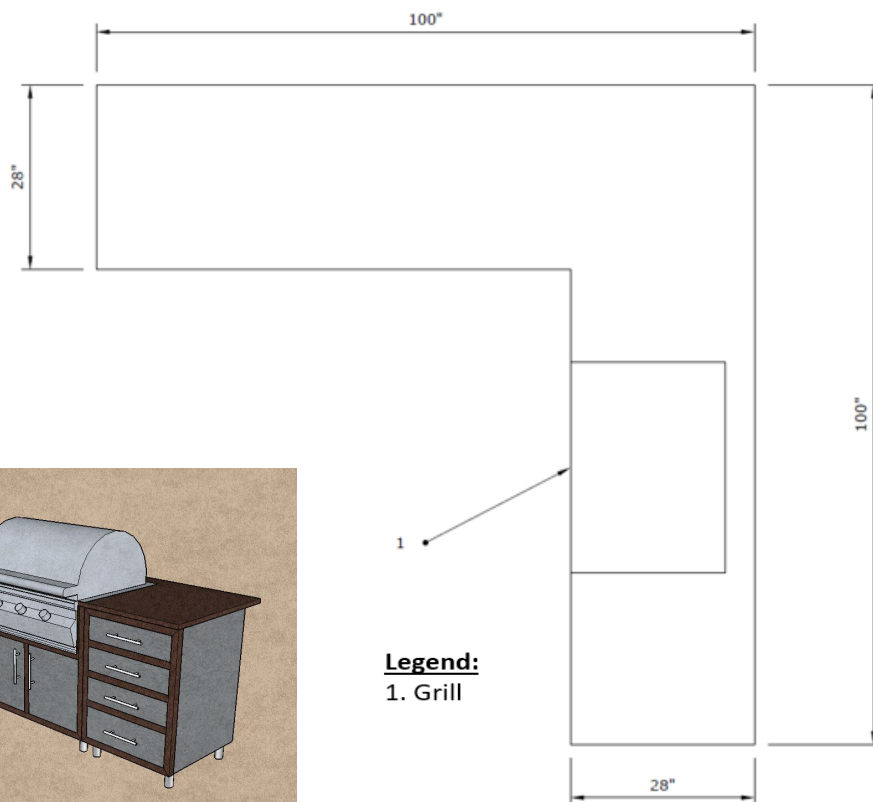
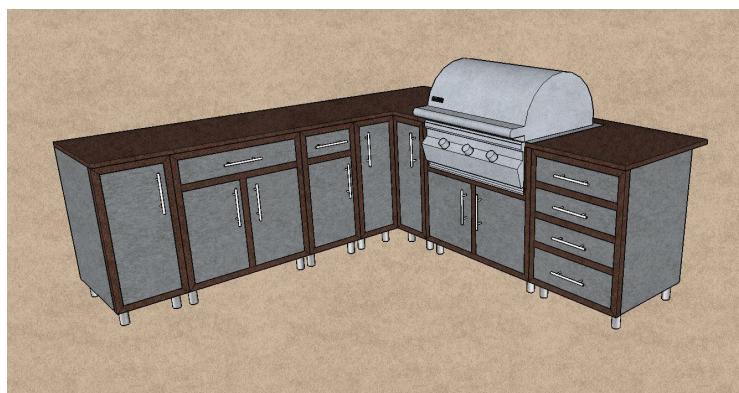
Northwest Metalcraft



Challenger's Northwest

- Features a Large, L-Shaped Design
- Serious Storage Space
- Tons of Counter Space
- Perfect For Large Gatherings
- Multifunctional Four Drawers Near Grill
- Sets Up In Minutes
- Complete Outdoor Kitchen Including Counter Tops

This outdoor kitchen is designed to house up to a 42" grill like our Lion 40" grill below. Already have a grill or need a bigger grill opening? No problem, we will build it to fit your appliances.



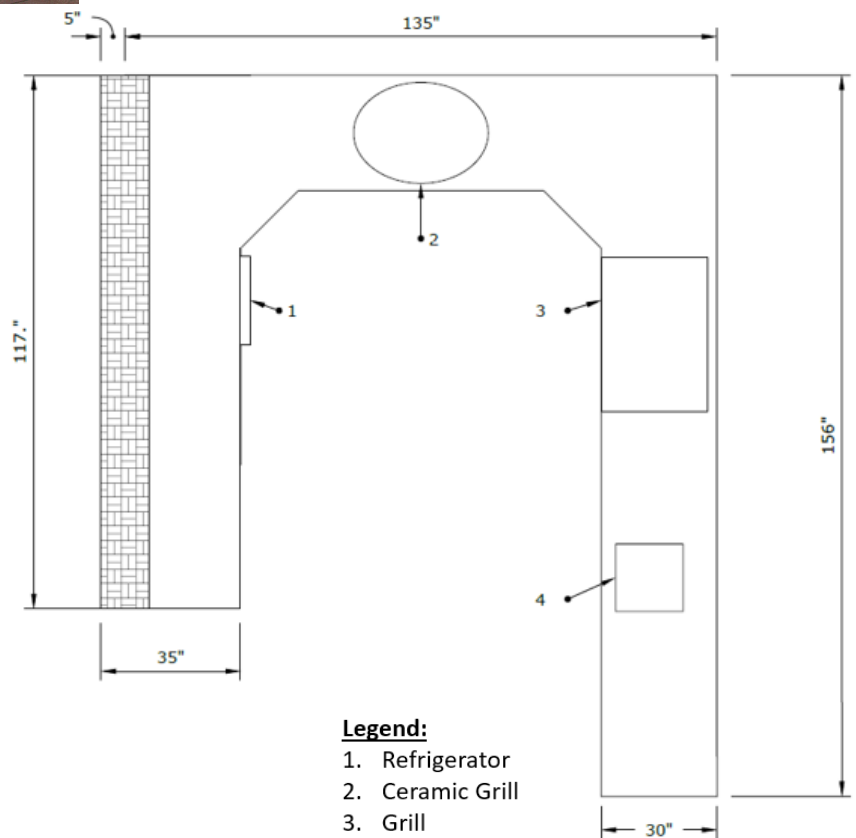
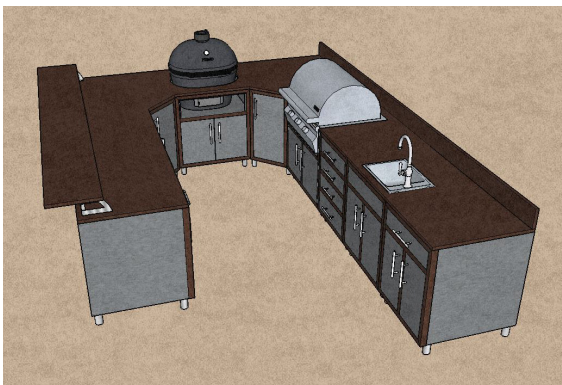
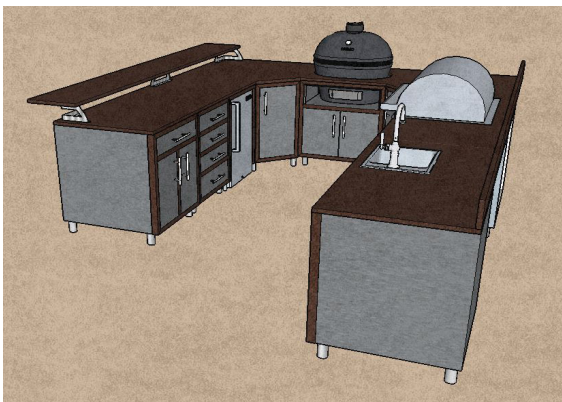


U-Shaped



Challenger's U-Shape

- Features a Long and Full Design
- Large Amounts of Storage
- Handy Beverage Refrigerator
- Sets Up In Minutes
- Plenty of Bar Space
- Large Ceramic Grill
- Complete Outdoor Kitchen Including Counter Tops



4

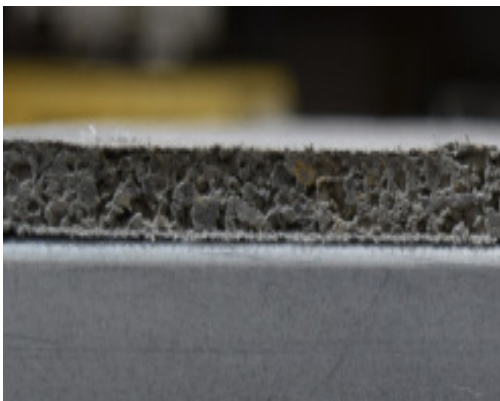


Fully Welded Frames

Big Ridge Rapid Panels™ feature fully welded frames. Aside from being stronger than the traditional screws used by other manufacturers, they also allow for tighter fit and finish. Since your outdoor kitchen is an investment, why not ensure it lasts. Our fully welded frames are built to do just that.

Other manufacturers use screws to build their frames. This is due to the considerable increase in equipment and labor costs associated with the welding process. Big Ridge feels that welding is the only acceptable method of assembly.

Why Fully Welded Frames vs Screws?



Rapid Panels™ with cement board attached to fully welded frame. Cement board sits flat.



Their panels with cement board attached to frames assembled with screws creating a gap.

When screws are used to assemble the frames, the screw head sticks out on the face of the frame. This makes the cement board not sit all the way down.

This creates a large gap. Since screws are randomly placed, the areas without screw heads under them will bow in. This can lead to cracking of the cement board. This can lead to cracks in the stucco or stone finish in the future.



Spot weld pry testing performed on Rapid Panels™.



Pry test result showing weld nugget ripping free from the steel without breaking the weld.

Compared to screws, welds are considerably stronger. In fact as you can see in these pictures, the weld is actually stronger than the steel .

This pry test shows the weld will not break, instead the steel is ripped apart but the weld stays intact.

Look closely at the competitor's frames. When screws are used, additional braces are needed at the corners to keep them square. Rapid Panels™ don't need these.

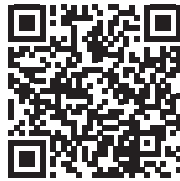


Big Ridge Rapid Panels™

DIY Done Right

Easiest System On The Market So Easy A Kid Can Do It!

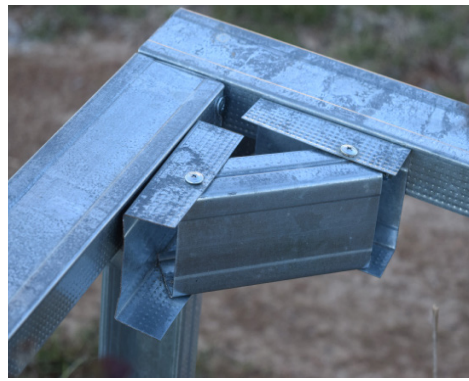
To prove just how easy our kits are to put together, we had our teenage boys put one together for us in *under 10 minutes!* You can see the video on our website at www.bigridgeoutdoorkitchens.com/shop



Here are a few things that make our outdoor kitchen kits so easy to put together in comparison to our competition.



Rapid Panels™ use heavy duty 12 gauge steel corner brackets installed for you. This ensures your modules stay square for good.



Their panels use a complicated and weaker system using steel stud pieces that can flex and allow your outdoor kitchen to become out of square.

Rapid Panels™ use heavy duty 12 gauge 90 degree squaring brackets. Big Ridge also pre-installs them while squaring your modules in a fixture to ensure they are accurately square. We leave them in place so when you get it, you simply screw the other panel to it. No need to square it again.

Other manufacturers send you scraps of steel studs. You need to square your modules and put these complicated parts together. Unfortunately, they don't hold square well.



One of the most difficult parts of the outdoor kitchen build is the bar counter. Even though it looks pretty straight forward, getting each module to match the next one while keeping everything level and square can be difficult. The installation of the hidden bar supports requires cuts in just the right locations.

That's why Rapid Panels™ bar counters come just like you see here, fully assembled. This picture shows the Rapid Panels™ Bar Counter With Cement Board, if you choose Rapid Panels™, they are also fully assembled (without cement board), and sent to you this way.

The competition sends you the panels and supports and the rest is up to you. This can be even more tricky with rounded or clipped corners.



We Have Everything You Need

Our Package Prices Can't Be Beat!



Top quality and amazing looks don't have to kill the bank. We offer everything you need for an amazing outdoor kitchen. We offer many amazing brands and offer them at competitive prices.

But you will save even more when you purchase your appliances and the outdoor kitchen from us. Package prices are lower than our already normally low published price.

Just try us, you will see why our non-published package prices can't be beat! If you don't see it on our website, there is a good chance we carry it. Just ask us, we would be happy to assist.

FIREMAGIC®

LION
PREMIUM GRILLS

Primo
GRILLS AND SMOKERS

SUMMIT
APPLIANCE




Frequently Asked Questions

What if I already have my own appliances? Can you make an outdoor kitchen for me using my own appliances? Yes, we make custom outdoor kitchens using appliances we supply or ones you already own.

I need a special size to fit in my limited space, can you do that? Yes, we make custom outdoor kitchens based on your needs. We offer free design assistance.

I have a pergola and need to go around poles, can you do that? Yes, we make custom outdoor kitchens based on your needs. We offer free design assistance.

Do I have to use a insulating liner around my grill with your product? No, we use only non-combustable materials which do not require the use of insulating liners.

Do you offer additional services like stone? Yes, we can offer the installation of stone or stucco. However, due to shipping it is likely to be less expensive if done on site by a contractor. If you would like more information on pricing just give us a call.

How long will it take me to put my kit together? It varies based on which kit you purchase and the complexity of the outdoor kitchen. A standard 10 foot Rapid Panel™ kit with cement board will take about 30 to 45 minutes to assemble, level, and be prepared to apply your finish materials. See our video at www.bigridgeoutdoorkitchens.com/shop to see a 10 foot outdoor kitchen assembled in under 10 minutes.

Are the kits complete? What extras do I have to buy? Our kits include everything you need to assemble the outdoor kitchen kits. Depending on which kit you purchase (with or without cement board) you will need cement board. All hardware is included.

We also offer vents which are required for gas appliance installation, as well as GFCI installation. The wiring, related materials, and connection are to be done on site and are not included.

Of course you will need to purchase your appliances, finish materials, etc. We would be happy to answer any questions.

Will these frames support the weight of concrete counter tops and real stone? Yes, we use heavy duty load bearing structural steel. The same steel used in commercial building construction. It will hold concrete, granite, natural stone, and heavy appliance with no issue. Call us for more information.

What if I have problems with the assembly of my outdoor kitchen? Here is where you will see a major difference between us and our competitors. We are available 6 days a week and during peak times 7 days a week. Call or email us and a live person will walk you through anything you need assistance with.

Can I send you a hand drawn sketch of my project? Napkins accepted! Yes, please send your sketch, don't worry what it looks like. We will walk you through the process and make the outdoor kitchen of your dreams. Send it to sales@bigridgeoutdoorkitchens.com or call us and we will help you.

Do you really build every outdoor kitchen fully prior to shipping it? Yes, we build the entire outdoor kitchen in our factory on level platforms. We assemble every module completely. If you purchase your appliances from us, we test fit every appliance. Otherwise, we use the dimensions you provide us. All you do is put it back the way we had it!

This way we know your outdoor kitchen will work as promised. In fact this is one of the reasons you will be able to assemble your outdoor kitchen in minutes rather than weeks.

How long after I order will I get my outdoor kitchen? Shipping times vary depending on current production volume. Our normal turnaround time is between 7 - 10 days. If you are concerned about timing, give us a call, we will do what we can to get it to you when you need it.

In a hurry? Our stock Rapid Panel™ Kits can ship within 72 hours when the appliances are purchased from us. Call us for more information on our stock kits.

Do you offer Contractor Discounts? Yes, we work with many contractors and welcome the opportunity to work with you. Call us and we will get you started in our contractor partner program. There are many advantages to our system. Give us a call today to find out more.

Give Us A Call Today!

Rapid Panels™ DIY Done Right

Make the most of your free time. Enjoy the outdoors with family and friends. With Big Ridge, your outdoor living area will be the focal point of your home. Relax, Big Ridge will help you realize the outdoor kitchen of your dreams.



BIG RIDGE™



Outdoor Kitchens



Big Ridge Outdoor Kitchens, LLC

1582 New Highway 68
Sweetwater, TN 37874

210-483-3114

www.diyoutdoor.kitchen